



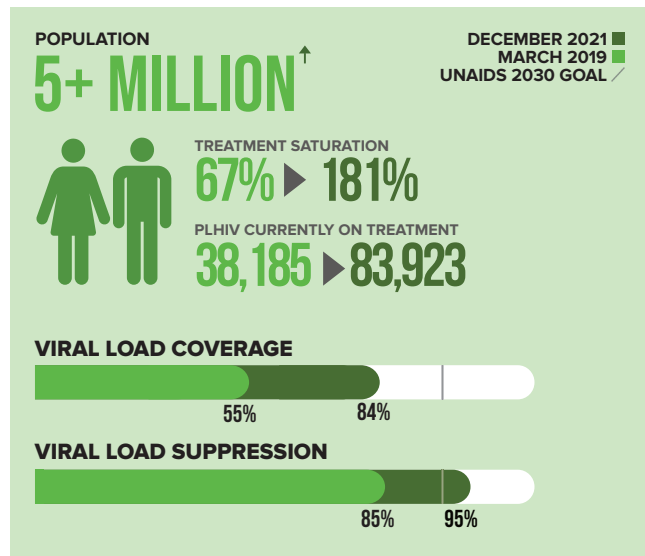
# FCT – ABUJA

## HIV/AIDS EPIDEMIC CONTROL BULLETIN

DECEMBER 2021 EDITION

### PROGRESS TOWARDS EPIDEMIC CONTROL: FCT – ABUJA

PEPFAR's focus on sustainable epidemic control began in 2014 when it pivoted to a data-driven approach that strategically focuses on geographic areas and populations where HIV/AIDS is most prevalent. It provided a road map for progress and impact of its recent strategy to accelerate HIV/AIDS Epidemic Control by 2020 in 13 high-burden countries. Nigeria was among more than 50 other countries with the greatest potential to achieve HIV/AIDS epidemic control by year 2020.



In Nigeria, the NAHS results showed FCT ranked 2nd in the North Central with a prevalence of 1.6 which is above the national prevalence of 1.4%. FCT was classified as a SURGE state; thus, was prioritized for the PEPFAR anti-retroviral treatment rapid scale-up response (SURGE) activities with the aim of pushing her to achieve epidemic control. The number of PLHIV placed on treatment has greatly improved over the last few years. As of December 2021, 83,923 people were placed on treatment and 95% of them were virally suppressed.

PEPFAR Nigeria, through the U.S. Center for Disease Control and Prevention (CDC) and its implementing partner – Institute for Human Virology (IHV), are collaborating with the FCT administration to deploy strategies including optimized facility and community-based testing strategies. Others are same-day ART initiation for identified clients, improved client care and retention strategies, knowledge sharing, and learning using the ECHO telemedicine technology, improved client-centric case management approach to optimize retention and virologic suppression.

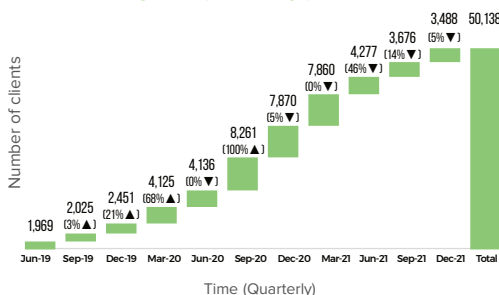
### CASE FINDINGS FOR PLHIV

WITHIN 33 MONTHS, MARCH 2019 – DECEMBER 2021

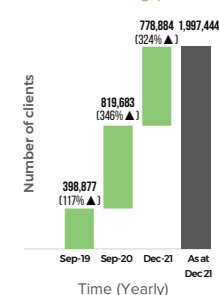
**811,117**  
CLIENTS RECEIVED HIV COUNSELING AND TESTING.

**50,138**  
PLHIV WERE IDENTIFIED AND REPORTED BETWEEN APRIL 2019 – DECEMBER 2021.

HIV Case Finding Trend (FCT – Abuja)



HIV Case Finding (National)



### 4 STRATEGIES DEPLOYED FOR OPTIMIZED CASE FINDING

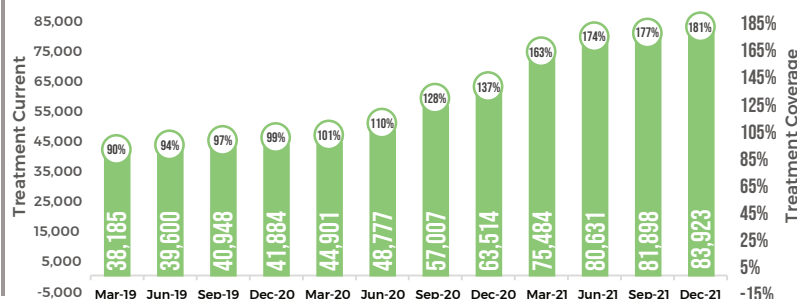
1. Facility-based provider-initiated counseling and testing.
2. Optimized client risk stratification.
3. High-quality index testing Recent HIV infection testing.
4. HIV self-testing.

### PROGRESS TOWARDS TREATMENT

WITHIN 33 MONTHS, MARCH 2019 – DECEMBER 2021

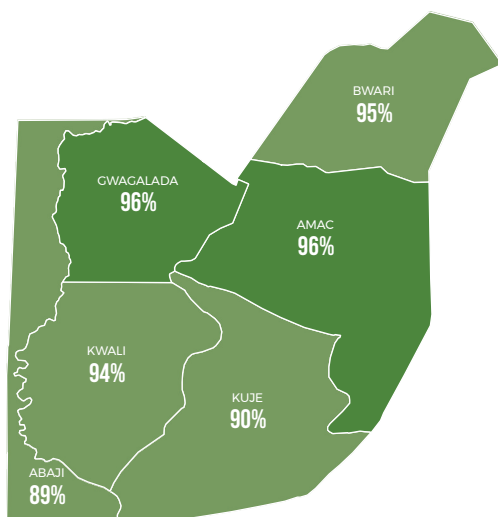
**50,138**  
PLHIV WERE NEWLY INITIATED ON LIFE-SAVING TREATMENT.

**92%**  
LINKAGE RATE WAS RECORDED AMONG CLIENTS WHO WERE NEWLY INITIATED ON LIFE-SAVING TREATMENT.



### 4 STRATEGIES DEPLOYED FOR IMPROVED TREATMENT SATURATION

1. Same-day initiation of ART.
2. Client-centered case management approach  
\* Real-time data monitoring for decision making  
\* Deployment of tele-medicine knowledge sharing support (ECHO Platform).
3. ART optimization
4. Differentiated service delivery models  
\* Geo-mapping for tracking patients.



**2 LGAS** HAVE ACHIEVED AT LEAST 95% VIRAL LOAD SUPPRESSION

**4 LGAS** HAVE ACHIEVED ABOVE 85% VIRAL LOAD SUPPRESSION

### STRATEGIES FOR IMPROVED VIRAL LOAD COVERAGE AND SUPPRESSION

- PCR laboratories mapping/optimization.
- Scale up of sample referral system.
- Remote sample log-in to laboratory.
- Information Management System - Facility electronic medical records enhanced to download VL results from LIMS (EMR-LIMS).
- End-to-end sample monitoring and tracking system to improve turnaround time.

## FCT EPIDEMIC CONTROL GOAL FY22



\*PEPFAR TARGET FOR FISCAL YEAR 2022



### GOVERNMENT CONTRIBUTION TO SURGE SUCCESS

1. Leadership and coordination by the FCT government through FMOH, FACA, and other state agencies
2. Provision of infrastructure and enabling environment
3. COVID-19 essential workers support allows the project teams free movement to reach patients with essential care
4. Availability of human resources for health to implement all SURGE project activities at the facility level
5. Waiver of user fees for all PLHIV receiving care.



### AREAS REQUIRING ADDITIONAL INTERVENTION BY THE FCT ADMINISTRATION

1. Human resource for health: To engage additional healthcare workers of different cadre to be posted, especially to the hard-to-reach areas.
2. Commodities support: Provision of Rapid HIV Test Kits (RTK) to complement PEPFAR's 196,612 RTKs, and Asante Rapid Test Kits for recent infection to complement PEPFAR's 2,172 Asante Rapid Test Kits.
3. Health policy and legislation to support all additional PLHIV activities including that of key populations, adolescents and youth living with HIV, pregnant women, and children living with HIV.
4. Engender program ownership, coordination, and leadership: Government ministries, departments, and agencies to take full ownership of ingenious health programs that will improve the health of FCT residents.