

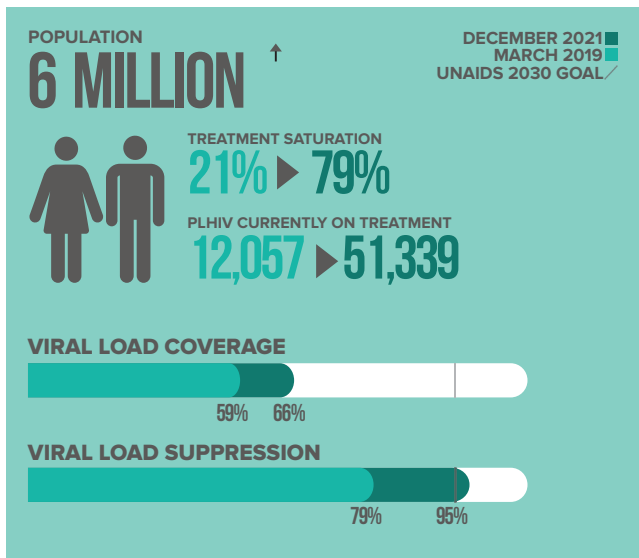
IMO STATE

HIV/AIDS EPIDEMIC CONTROL BULLETIN

DECEMBER 2021 EDITION

PROGRESS TOWARDS EPIDEMIC CONTROL: IMO STATE

PEPFAR's focus on sustainable epidemic control began in 2014 when it pivoted to a data-driven approach that strategically focuses on geographic areas and populations where HIV/AIDS is most prevalent. It provided a road map for progress and impact of its recent strategy to accelerate HIV/AIDS Epidemic Control by 2020 in 13 high-burden countries. Nigeria was among more than 50 other countries with the greatest potential to achieve HIV/AIDS epidemic control by year 2020.



In Nigeria, the NAHS results were used to geographically prioritize eight states; Akwa Ibom, Rivers, Abia, Anambra, Imo, Enugu, Lagos, and Delta) having contributed 56% of the total unmet need (PLHIV yet to be placed on treatment). With HIV prevalence at 1.5%, Imo state was classified as a SURGE state because of the low treatment coverage and high unmet needs; thus, it was prioritized for the PEPFAR anti-retroviral treatment rapid scale-up response (SURGE) activities with the aim of achieving 81% treatment coverage by the end of the fiscal year 2023 (FY23). The treatment saturation, viral load coverage and suppression has greatly improved over the last few years. As at December 2021, 51,339 persons were placed on the lifesaving antiretroviral therapy (79% of the estimated persons living with HIV in 2021) with a viral suppression of 95%.

PEPFAR Nigeria, through the U.S. Center for Disease Control and Prevention (CDC) and its Implementing partner – Catholic Caritas Foundation of Nigeria (CCFN) will collaborate with the Imo State Government to deploy strategies including optimized facility and community-based testing strategies. Others are same-day ART initiation for identified clients, improved client care and retention strategies, knowledge sharing, and learning using the ECHO telemedicine technology, improved client-centric case management approach to optimize retention and virologic suppression.

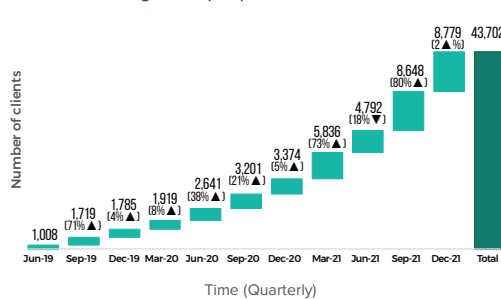
CASE FINDINGS FOR PLHIV

WITHIN 33 MONTHS, MARCH 2019 — DECEMBER 2021

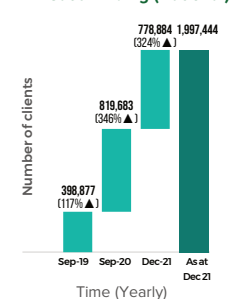
931,489
CLIENTS RECEIVED HIV COUNSELING AND TESTING.

43,702
PLHIV WERE IDENTIFIED AND REPORTED BETWEEN APRIL 2019 — DECEMBER 2021.

HIV Case Finding Trend (Imo)



HIV Case Finding (National)



5 STRATEGIES DEPLOYED FOR OPTIMIZED CASE FINDING

1. Facility-based provider-initiated counseling and testing.
2. Optimized client risk stratification.
3. High-quality index testing Recent HIV infection testing.
4. HIV self-testing.
5. Community-based strategies.

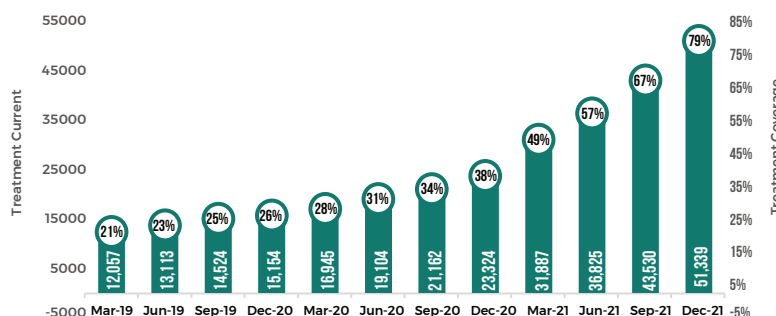
PROGRESS TOWARDS TREATMENT

WITHIN 33 MONTHS, MARCH 2019 — DECEMBER 2021

36,664

PLHIV WERE NEWLY INITIATED ON LIFE-SAVING TREATMENT.

86%
LINKAGE RATE WAS RECORDED AMONG CLIENTS WHO WERE NEWLY INITIATED ON LIFE-SAVING TREATMENT.



4 STRATEGIES DEPLOYED FOR IMPROVED TREATMENT SATURATION

1. Same-day initiation of ART.
2. Client-centered case management approach
 - * Real-time data monitoring for decision making
 - * Deployment of tele-medicine knowledge sharing support (ECHO Platform)
3. ART optimization
4. Differentiated service delivery models
 - * Geo-mapping for tracking patients.

