



NIGERIA

NATIONAL HIV SURVEILLANCE REPORT

January 2022 Edition

Data is for January 2022 and was downloaded from the NDR on 13 March 2022

OVERVIEW

HIV Surveillance is the ongoing systematic collection, analysis, interpretation, and use of data to improve health determinants and disseminate information regarding HIV/AIDS related events. In Nigeria, data is collected from client-centred monitoring throughout the cascade of clinical care to guide the national response and understand the trend of the epidemic. As Nigeria approaches epidemic control, three surveillance activities have been key in tracking the epidemic: HIV-1 Recent Infection Surveillance, Case-based Surveillance (CBS), and Mortality Surveillance (MS).

HIV-1 RECENT INFECTION SURVEILLANCE

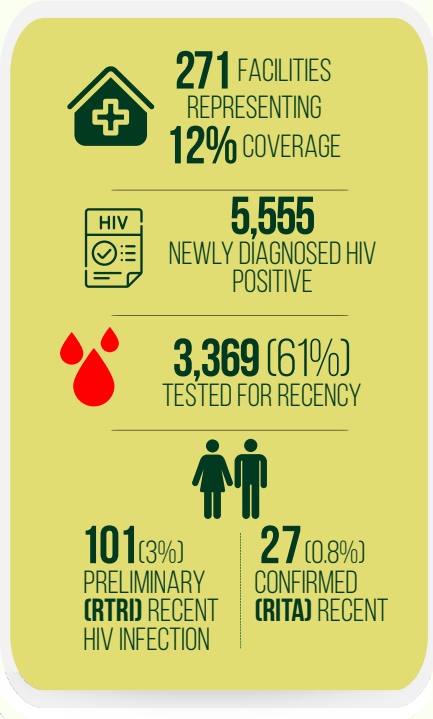
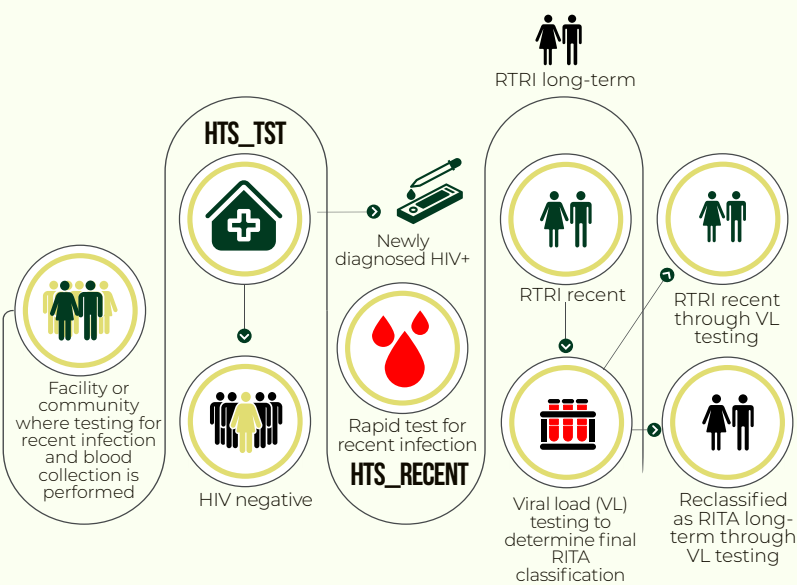
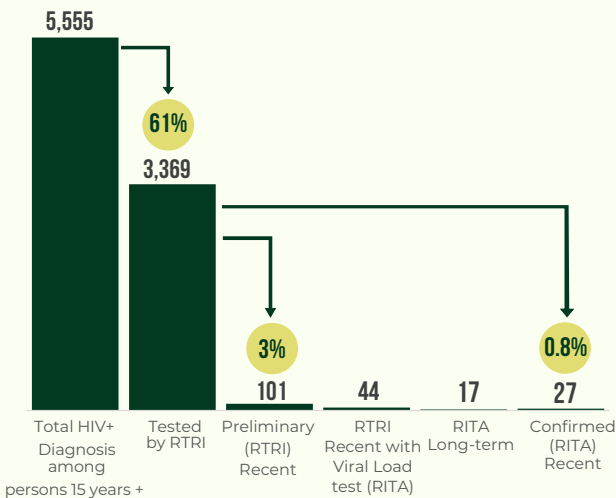
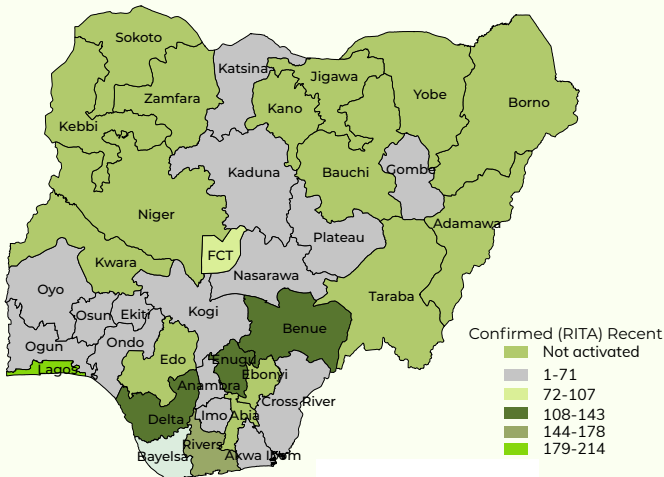


Figure 1
HIV-1 Recent Infection Surveillance cascade in January 2022



The chart above summarises HIV-1 Recent Infection Surveillance in 271 activated facilities and it displays the number of clients with new HIV+ diagnosis, number of HIV+ clients who had RTRI, and number of RTRI recent clients who had viral load confirmation for RITA.

Figure 2
Geographical distribution of confirmed (RITA) recent infections from March 2020 to January 2022



The map above is a geographical distribution of confirmed RITA recent infections from March 2020 to January 2022.

Figure 3a

Confirmed (RITA) recent infection by age and sex in Nigeria from March 2020 to January 2022

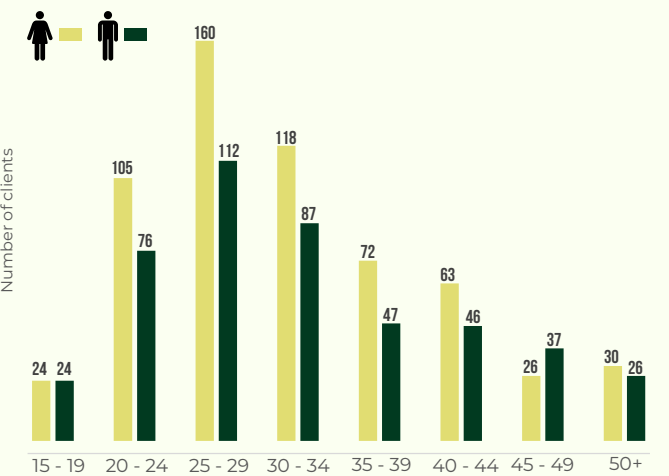


Figure 3b

Recent infection rates disaggregated by age & sex in January 2022

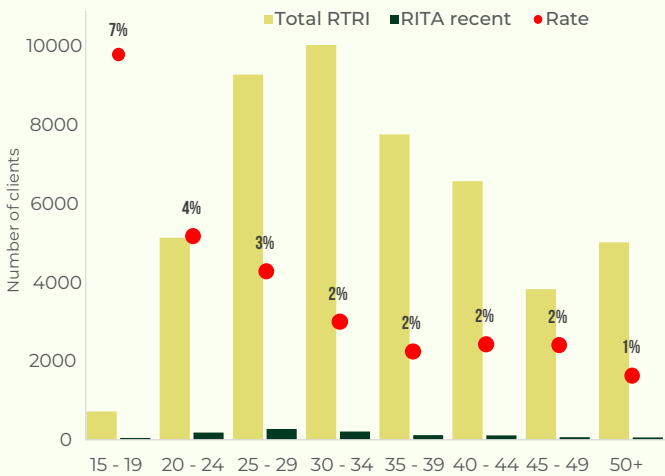
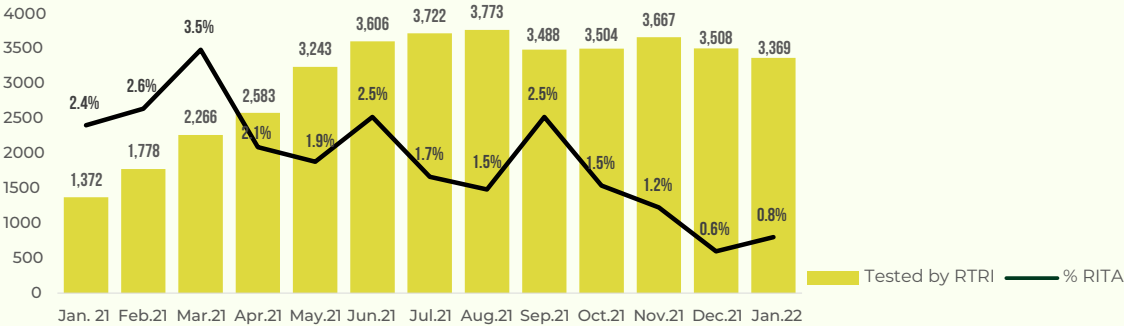


Figure 3c

Confirmed recent infection January 2021 to January 2022



CASE-BASED SURVEILLANCE

Case-based Surveillance systematically and continuously collects data on demographic and health events (sentinel events) about clients with HIV infection from diagnosis and routine clinical care to final outcomes. This data is used to characterize the HIV epidemic and guide program improvement.

Figure 4

Total number of clients newly diagnosed HIV+ in January 2022

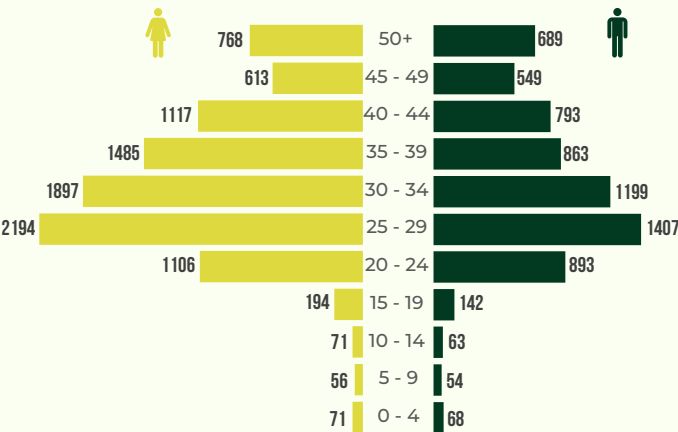


Figure 5

Monthly trend of clients by sex who commenced treatment over the past six months as of January 2022

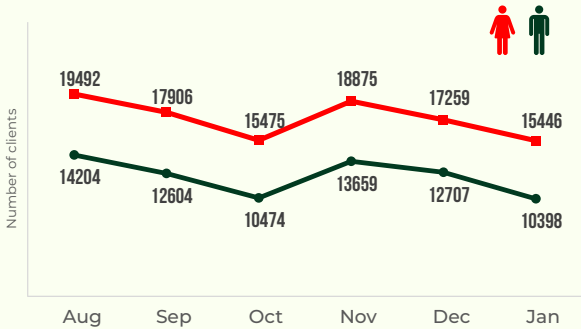


Figure 6
Client CD 4 COUNT < 200 and ≥ 200 in January 2022

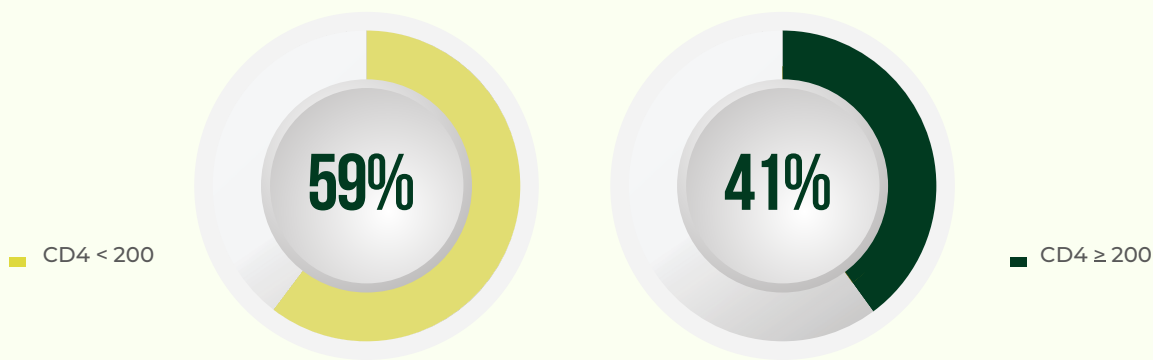


Figure 7
Clients diagnosed HIV+ and those who commenced treatment in January 2022

This chart shows the number of clients who tested HIV+ and those who commenced treatment (linkage) in January 2022. The linkage in January is above 100% and may be due to under reporting of newly tested HIV positives on the NDR or rollover of clients who tested positive in prior months but commenced treatment in January 2022.

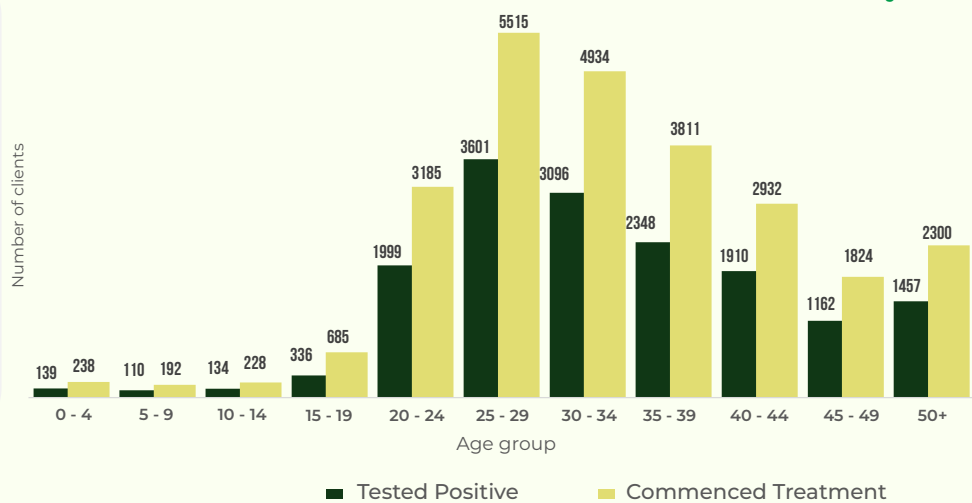


Figure 8
Distribution of Advanced HIV Disease (WHO stage III and IV HIV disease) by age and sex in January 2022

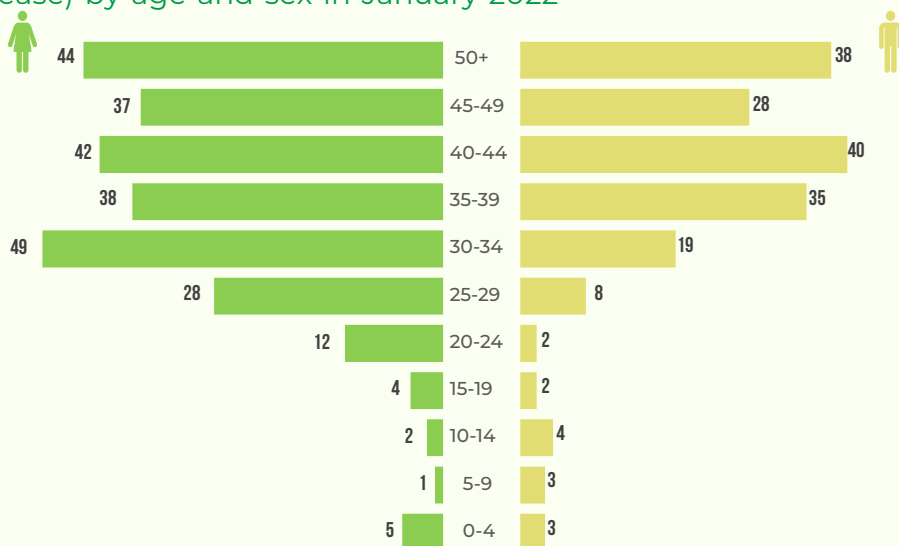
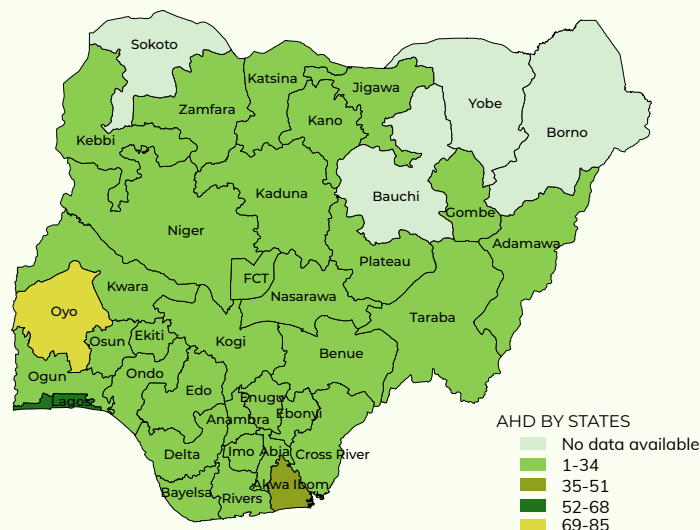


Figure 9
Distribution of newly diagnosed HIV+ clients with WHO stage III & IV HIV disease by state in January 2022



MORTALITY SURVEILLANCE

Mortality surveillance aims to determine the distribution and patterns of leading causes of death among people living with HIV (PLHIV) on treatment and the use of this information to reduce preventable deaths. The 2016 WHO Verbal Autopsy (VA) instrument is administered to eligible and consenting primary caregivers (usually a family member) who were with the deceased in the period leading to death. Data collected from VA is then uploaded to SmartVA analyze to generate the cause of death.

Figure 10a
Distribution of deaths by state in January 2022

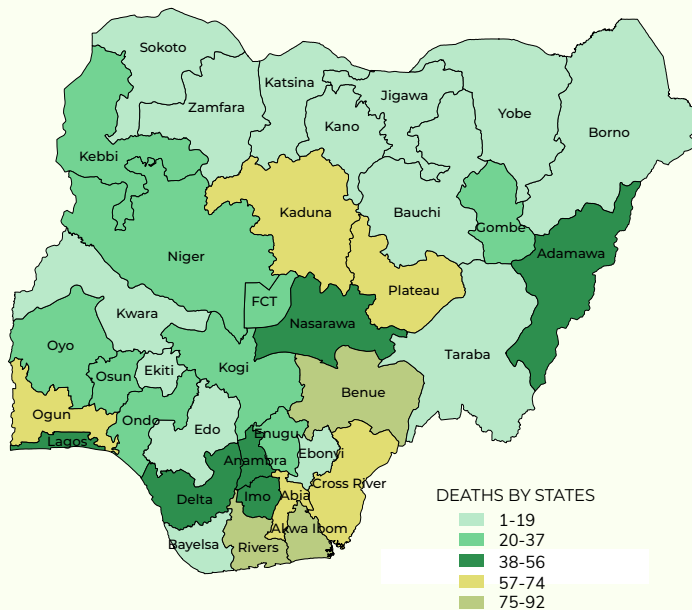


Figure 10b
Deaths by age and sex in January 2022

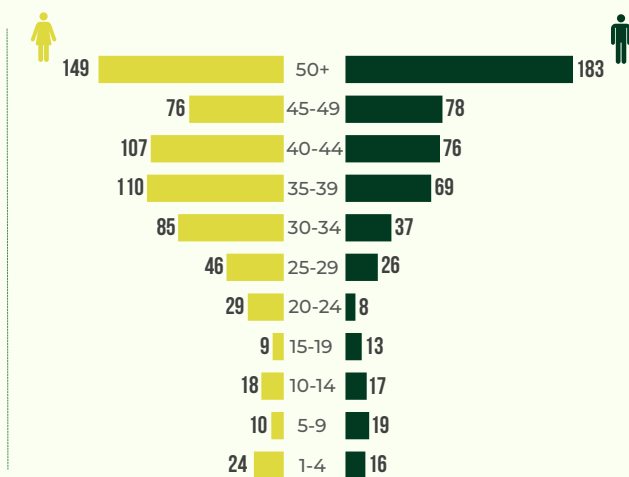
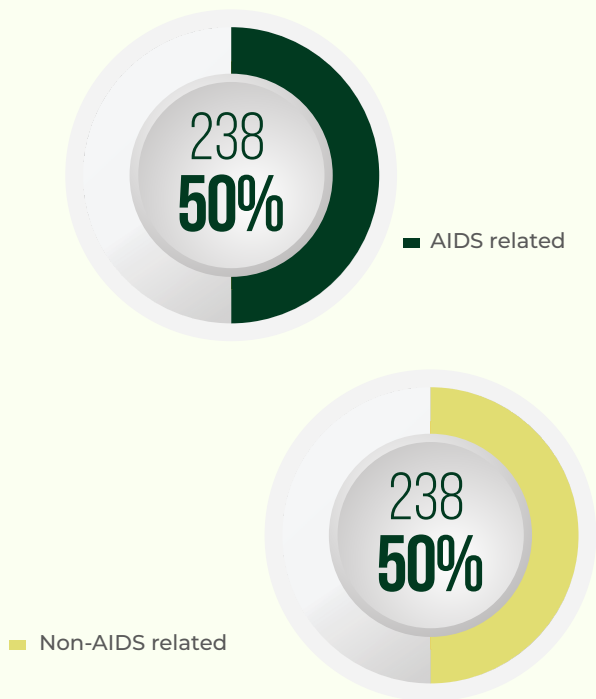


Figure 10c
AIDS-related and non-AIDS-related causes of death as of January 2022



946 Deaths recorded

529 417

8 Total number of states where mortality surveillance is activated.

89 Total number of activated facilities in these states.

476 VAs as of January 2022 to determine the causes of death.

139 Deaths were recorded in all the 89 facilities in January 2022.

81 58

Figure 11
Monthly trend of deaths in MS activated facilities by state as of January 2022

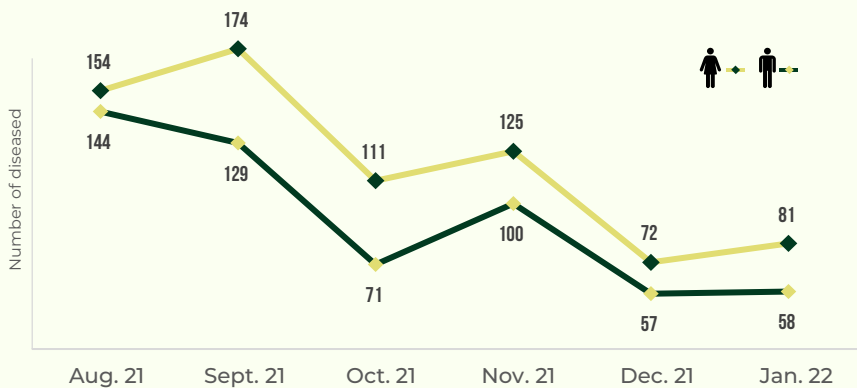


Figure 12
Death rates among clients currently on treatment as of January 2022

