



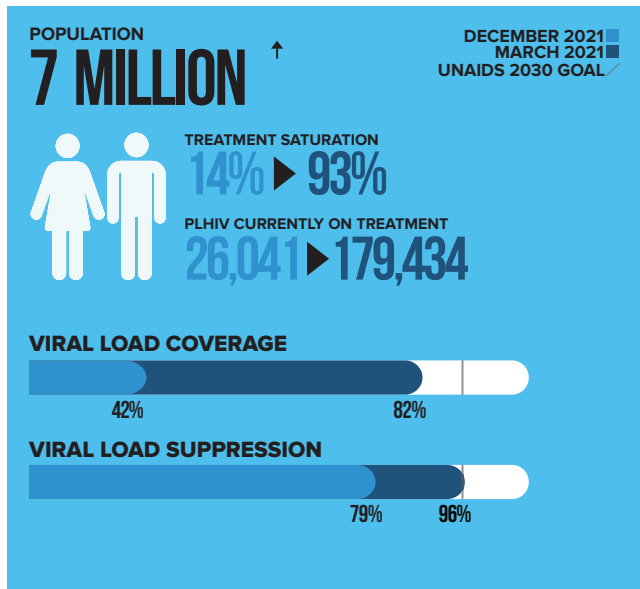
RIVERS STATE

HIV/AIDS EPIDEMIC CONTROL BULLETIN

DECEMBER 2021 EDITION

PROGRESS TOWARDS EPIDEMIC CONTROL: RIVERS STATE

PEPFAR's focus on sustainable epidemic control began in 2014 when it pivoted to a data-driven approach that strategically focuses on geographic areas and populations where HIV/AIDS is most prevalent. It provided a roadmap for progress and impact of its recent strategy to accelerate HIV/AIDS Epidemic Control by 2020 in 13 high-burden countries. Nigeria was among more than 50 other countries with the greatest potential to achieve HIV/AIDS epidemic control by year 2020.



In Nigeria, the NAHS results were used to geographically prioritize eight states including Akwa Ibom, Rivers, Abia, Anambra, Imo, Enugu, Lagos, and Delta) having contributed 56% of the total unmet need (PLHIV yet to be placed on treatment). Rivers state was classified as a SURGE state because of the low treatment coverage and high unmet needs; thus, it was prioritized for the PEPFAR anti-retroviral treatment rapid scale-up response (SURGE) activities. Rivers State had the 2nd highest prevalence in the south-south with a prevalence of 3.6% and treatment saturation of 14%. The number of PLHIV placed on treatment has greatly improved over the last few years. As of December 2021, 179,434 persons were placed on life-saving antiretroviral therapy with 96% viral suppression.

PEPFAR Nigeria, through the U.S. Center for Disease Control and Prevention (CDC) and its Implementing partner – Institute of Human Virology in Nigeria (IHVN), will collaborate with the Rivers state government to deploy strategies including optimized facility and community-based testing strategies. Others are same-day ART initiation for identified clients, improved client care and retention strategies, knowledge sharing, and learning using the ECHO telemedicine technology, improved client-centric case management approach to optimize retention and virologic suppression.

CASE FINDINGS FOR PLHIV

WITHIN 33 MONTHS, MARCH 2019 — DECEMBER 2021

4,058,621

CLIENTS RECEIVED HIV COUNSELING AND TESTING.

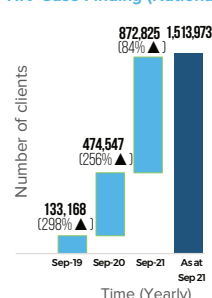
164,749

PLHIV WERE IDENTIFIED AND REPORTED BETWEEN APRIL 2019 — DECEMBER 2021.

HIV Case Finding Trend (Rivers)



HIV Case Finding (National)



5 STRATEGIES DEPLOYED FOR OPTIMIZED CASE FINDING

1. Facility-based provider-initiated counseling and testing.
2. Optimized client risk stratification.
3. High-quality index testing Recent HIV infection testing.
4. HIV self-testing.
5. Community-based strategies.

PROGRESS TOWARDS TREATMENT

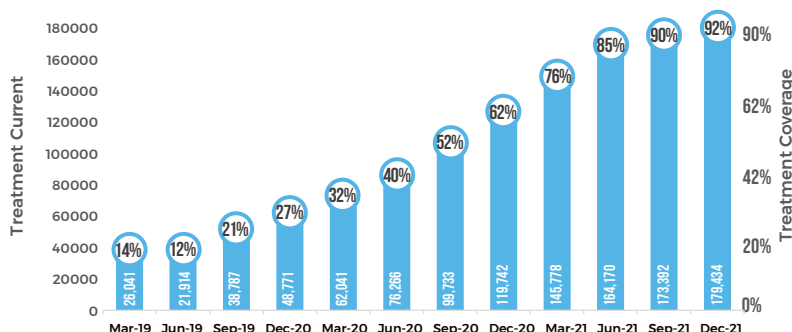
WITHIN 33 MONTHS, MARCH 2019 — DECEMBER 2021

156,735

PLHIV WERE NEWLY INITIATED ON LIFE-SAVING TREATMENT.

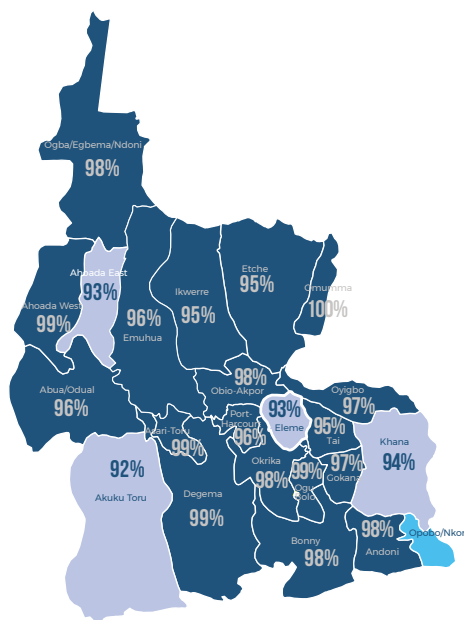
94%

LINKAGE RATE WAS RECORDED AMONG CLIENTS WHO WERE NEWLY INITIATED ON LIFE-SAVING TREATMENT.



4 STRATEGIES DEPLOYED FOR IMPROVED TREATMENT SATURATION

1. Same-day initiation of ART.
2. Client-centered case management approach
 - * Real-time data monitoring for decision making
 - * Deployment of tele-medicine knowledge sharing support (ECHO Platform).
3. ART optimization
4. Differentiated service delivery models
 - * Geo-mapping for tracking patients.



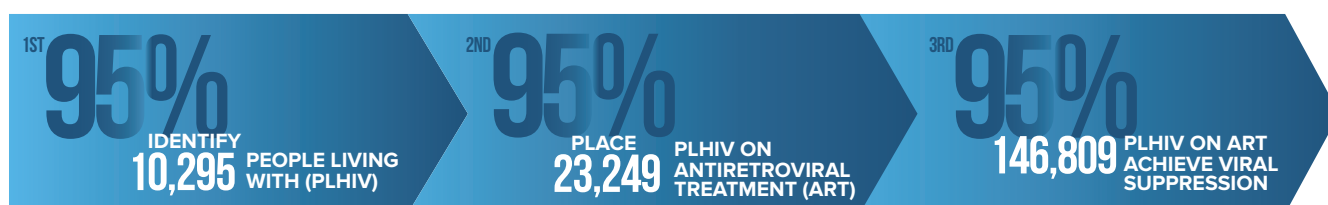
17 LGAS HAVE ACHIEVED AT LEAST 95% VIRAL LOAD SUPPRESSION

4 LGAS HAVE ACHIEVED ABOVE 85% VIRAL
LOAD SUPPRESSION

STRATEGIES FOR IMPROVED VIRAL LOAD COVERAGE AND SUPPRESSION

- PCR laboratories mapping/optimization.
- Scale up of sample referral system.
- Remote sample log-in to laboratory.
- Information Management System - Facility electronic medical records enhanced to download VL results from LIMS (EMR-LIMS).
- End-to-end sample monitoring and tracking system to improve turnaround time.

RIVERS STATE EPIDEMIC CONTROL GOAL FY22



*PEPFAR TARGET FOR FISCAL YEAR 2022



1. Leadership and coordination by the Rivers state Government through FMOH, SACA and other state agencies.
2. Provision of infrastructure and enabling environment.
3. COVID-19 essential workers support allows the project teams free movement to reach patients with essential care.
4. Availability of human resources for health to implement all SURGE project activities at the facility level.
5. Waiver of user fees for all PLHIV receiving care.



1. Human resource for health: To engage additional healthcare workers of different cadre to be posted, especially to the hard-to-reach areas.
2. Commodities support: Provision of Rapid HIV Test Kits (RTK) to complement PEPFAR's 372,019 RTKs, and Asante Rapid Test Kits for recent infection to complement PEPFAR's 4,450 Asante Rapid Test Kits.
3. Health policy and legislation to support all additional PLHIV activities including that of key populations, adolescents and youth living with HIV, pregnant women, and children living with HIV.
4. Engender program ownership, coordination and leadership: Government ministries, departments and agencies to take full ownership of ingenious health programs that will improve the health of Rivers state residents.