

NATIONAL DATA REPOSITORY (NDR)

The National Data Repository (NDR) is a project led by the Federal Ministry of Health and supported by PEPFAR. It is a database of de-identified client-level data collected from service delivery sites across the country. Client-level data is either entered directly or transcribed from paper-based records into Electronic Medical Records (EMR) at the sites and regularly uploaded to the NDR. The NDR currently collects longitudinal client-level data for every clinical encounter from enrolment into HIV care to the last date of clinic visit. The system supports real-time program and client-level monitoring and tracks Nigeria's progress towards achieving the UNAIDS 95-95-95 targets. Amongst other things, the NDR houses data for: tracking HIV-1 recent infection; monitoring sentinel events in the continuum of care; and informing public health response.

An analysis of the data shows 6,767,074 clients ever enrolled in care while there were 344,648 patient-visits across 2,268 reporting facilities within the month.




6,767,074
individuals have enrolled in care.



344,648
patients visited within the month.



2,268
registered Facilities on the NDR



2,090 Treatment facilities were reported for March 2022

1,086 SURGE facilities reported for March 2022

FIRST 95: NEWLY TESTED

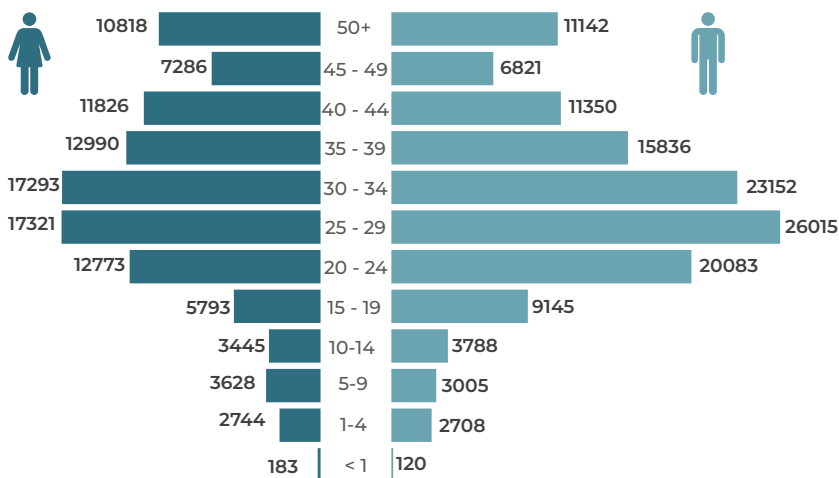


Figure 1: Case Finding by Age and Sex in March 2022

CASE FINDING BY AGE & SEX

The chart represents HIV case finding disaggregated by age and sex. A total of **239,265** clients were tested for HIV, **106,100 (44%)** were males while **133,165 (56%)** were females.

FIRST 95:
NEWLY TESTED BY STATES

The opposite map displays the distribution of clients newly tested for HIV by state.

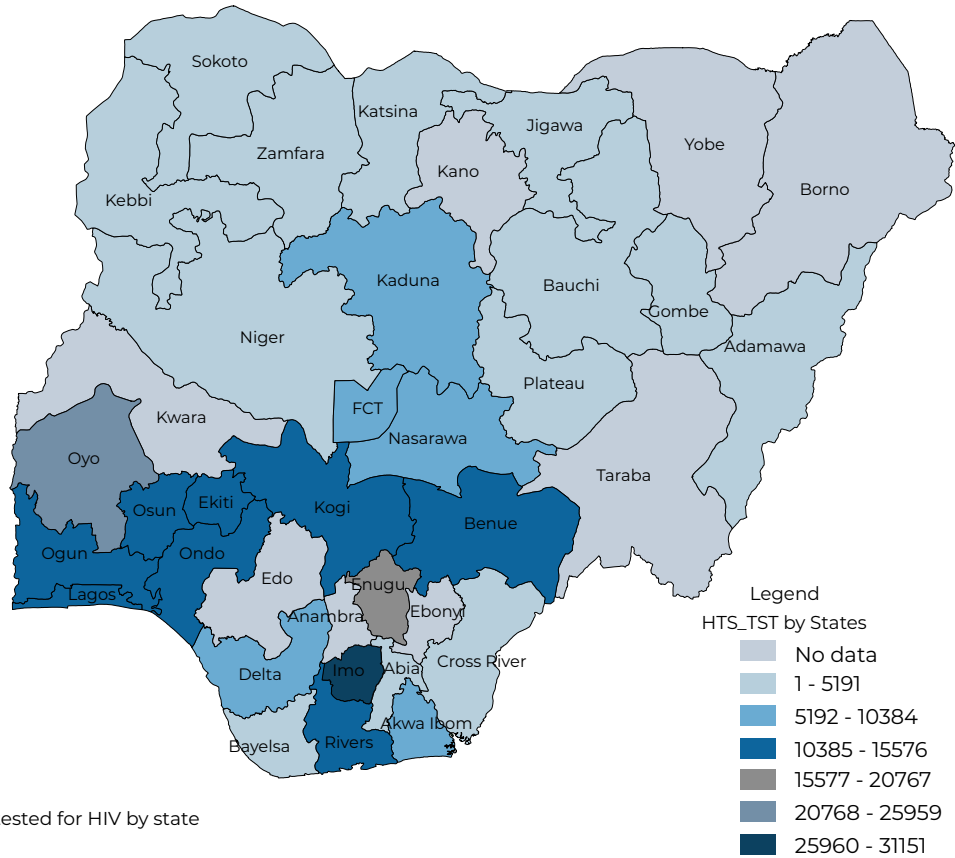


Figure 2: Distribution of clients newly tested for HIV by state

FIRST 95:
NEWLY TESTED POSITIVE

The chart below reflects HTS cascade among states that reported on the NDR in March 2022. It shows the total number of clients tested, identified HIV positive, and the percentage yield (%).

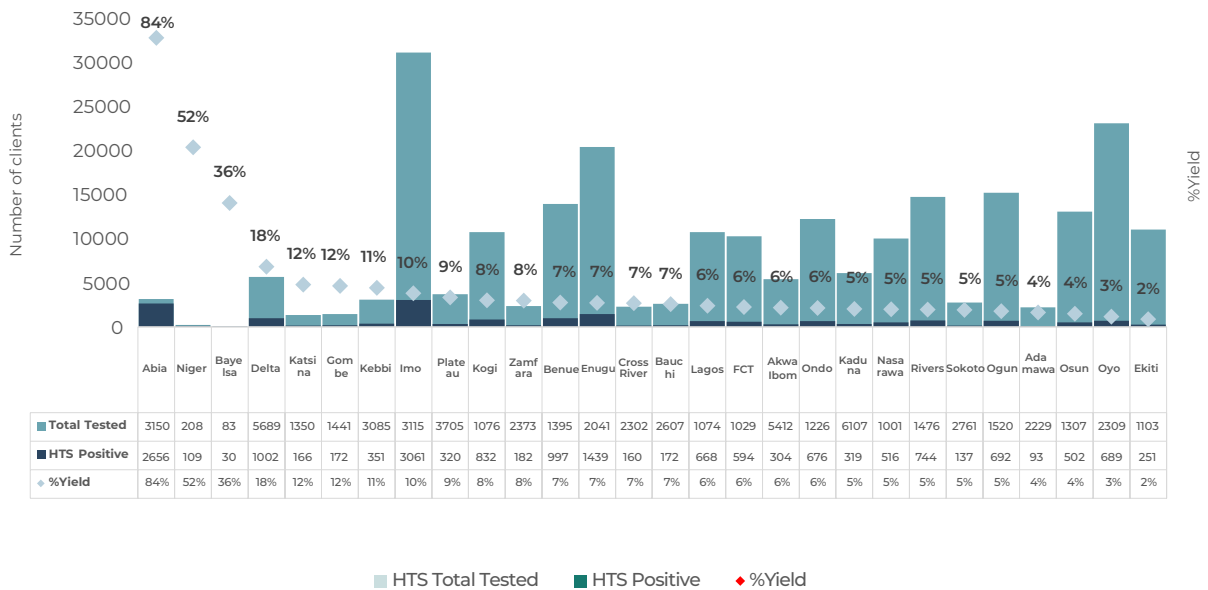


Figure 3: Case Finding and Testing Yield by states in March 2022

CASE FINDING AND TESTING YIELD BY MODALITIES IN MARCH 2022

The chart below illustrates HTS cascade by testing modalities in March 2022. The highest yield (16%) was seen among tests conducted in "STI" settings, while the lowest yield (4%) was found among tests conducted at the Standalone, TB, and FP units.

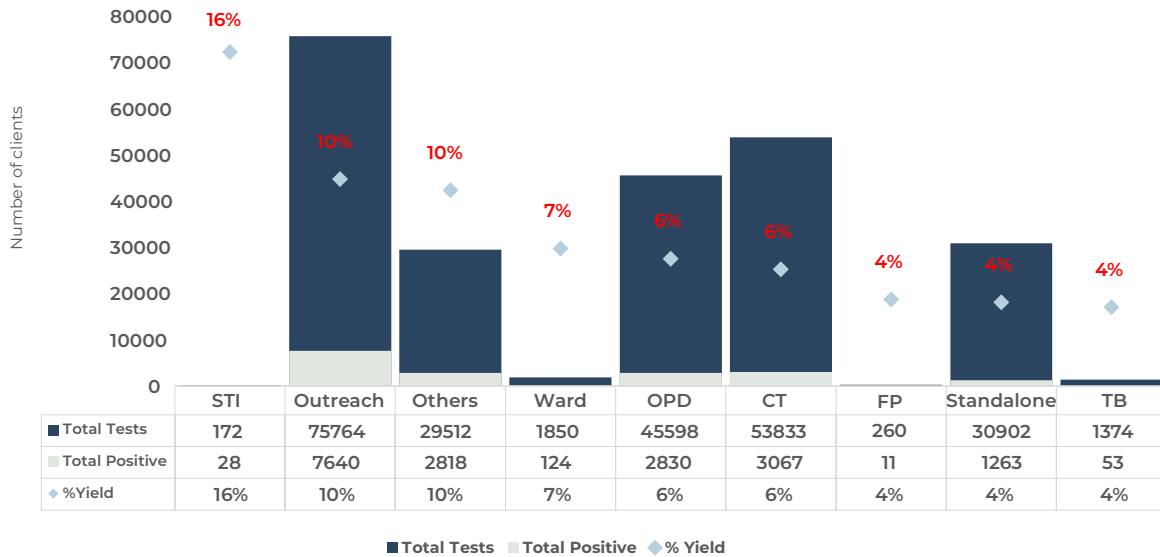


Figure 4: Case Finding and Testing Yield by Modalities in March 2022

CT: Counseling and Testing | FP: Family Planning | OPD: Out Patients Department | STI: Sexually Transmitted Infection | TB: Tuberculosis

FIRST 95: NEWLY TESTED POSITIVE (CASE FINDING) Linkage to treatment by states in March 2022

The chart below shows the number of newly tested HIV-positive clients linked (initiated) to ART in March 2022 among all reporting states. The number of clients initiated on ART in most states is higher than the number of clients who tested HIV positive and this is mostly due to HTS underreporting on the NDR.

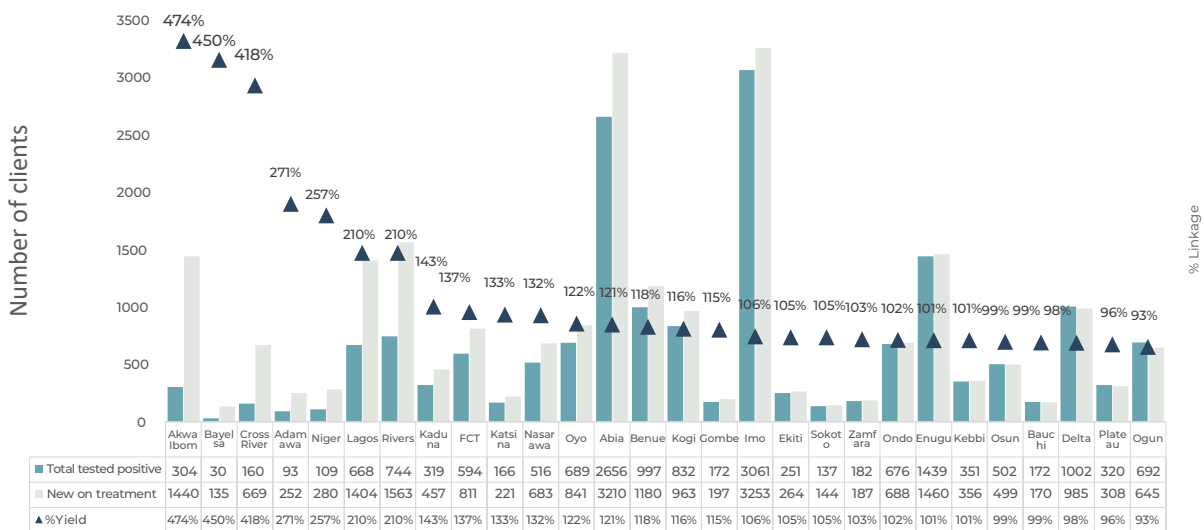
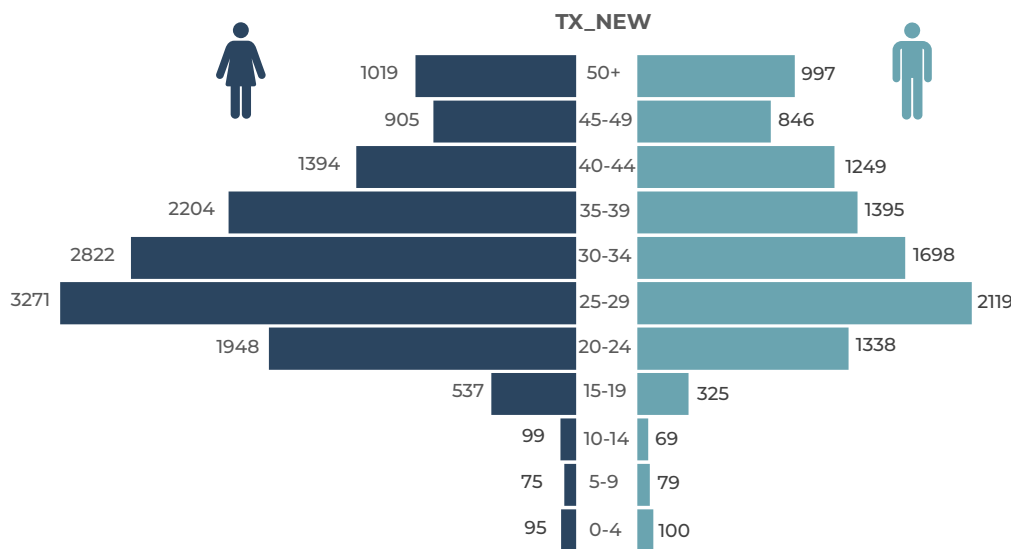


Figure 5: Linkage to Treatment by States in March 2022

SECOND 95:

PATIENTS IN HIV CARE AND TREATMENT



This chart highlights the number of clients newly initiated on treatment representing the uptake of ART services. The disaggregation by sex and age bands is important in understanding the distribution of ART initiation especially among vulnerable groups.

Figure 6: Patients newly initiated on treatment in March 2022

The opposite chart summarises uptake and retention on the continuum of ART services. It gives a snapshot of progress towards ART saturation among people living with HIV (PLHIV) by age and sex bands. This understanding will guide programming and resource allocation.

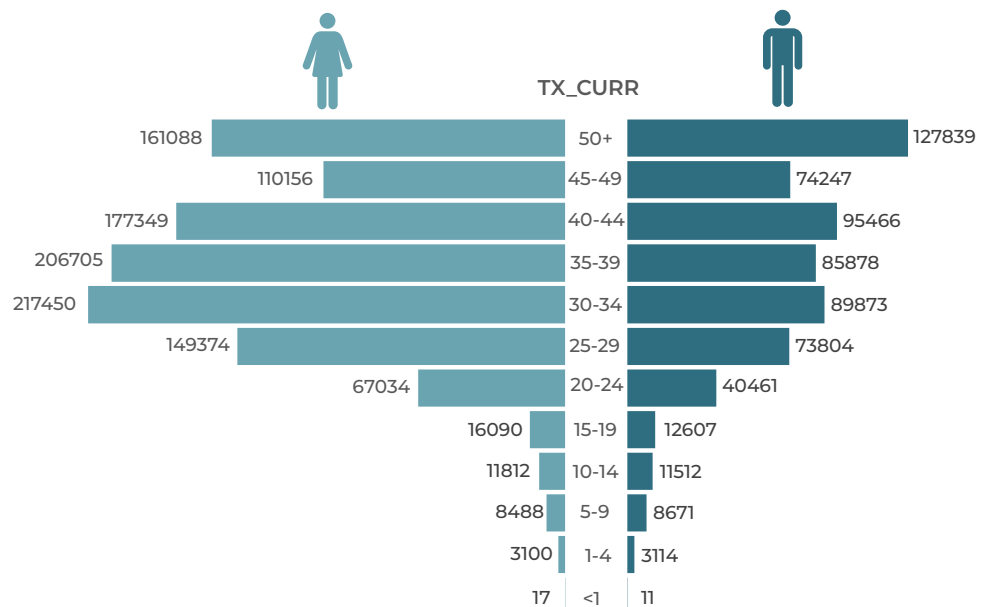
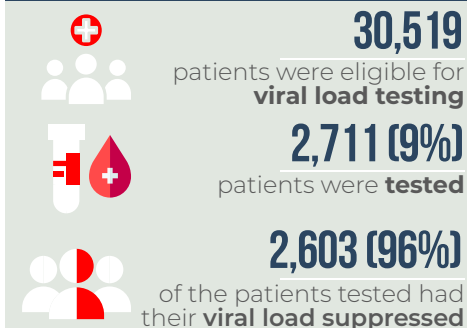


Figure 7: Patients currently on treatment in March 2022

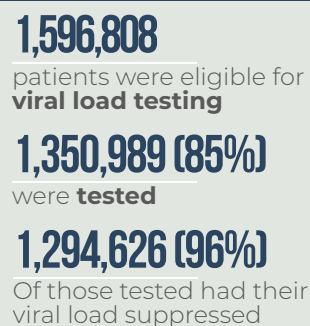
THIRD 95:

VIRAL SUPPRESSION AND QUALITY CARE

Initial Viral load (cohort started ART in September 2021)



Routine Viral load as at March 2022



DATA FROM THE NATIONAL LABORATORY INFORMATION MANAGEMENT SYSTEM (LIMS) AS AT MARCH 2022

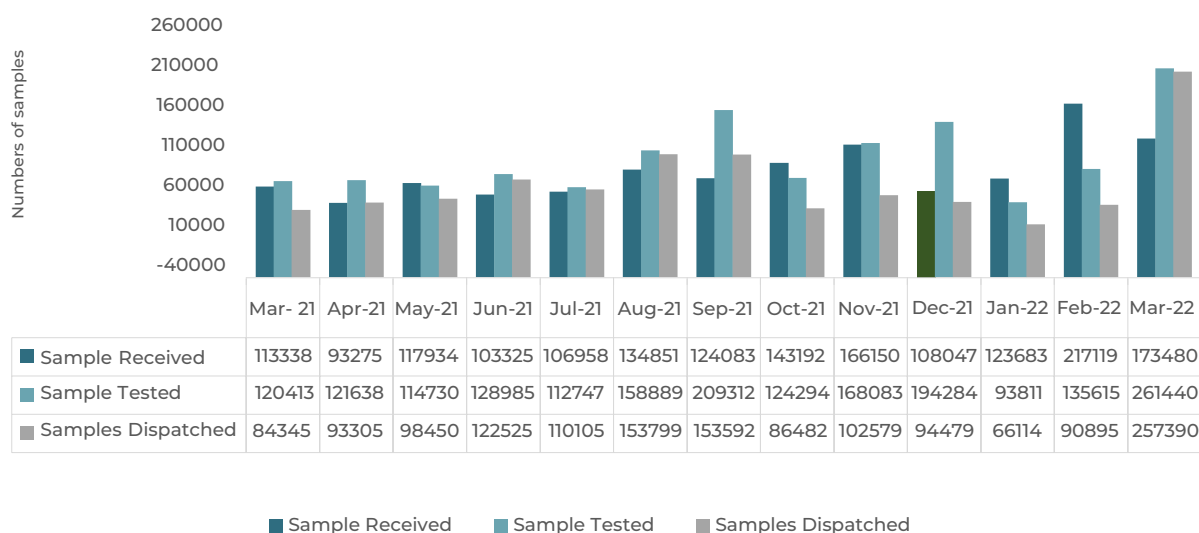


Figure 8: Viral load from March 2021 to March 2022

An analysis of the data from March 2021 to March 2022 showed that the number of samples tested (1,944,241) was more than the number of samples received (1,725,435); this can be explained by under-reporting on the NDR. Total samples dispatched for the month was 1,514,060 (78%).

DATA FROM THE NATIONAL LABORATORY INFORMATION MANAGEMENT SYSTEM (LIMS) AS AT MARCH 2022

A summary of the data from March 2021 to March 2022 showed that total samples tested (34,134) was more than total samples received (29,548). This can be explained by testing of spill-over samples received from previous months. The trend also shows that from January 2022 to March 2022, samples received were more than the samples tested. This is an improvement in the data reporting process.

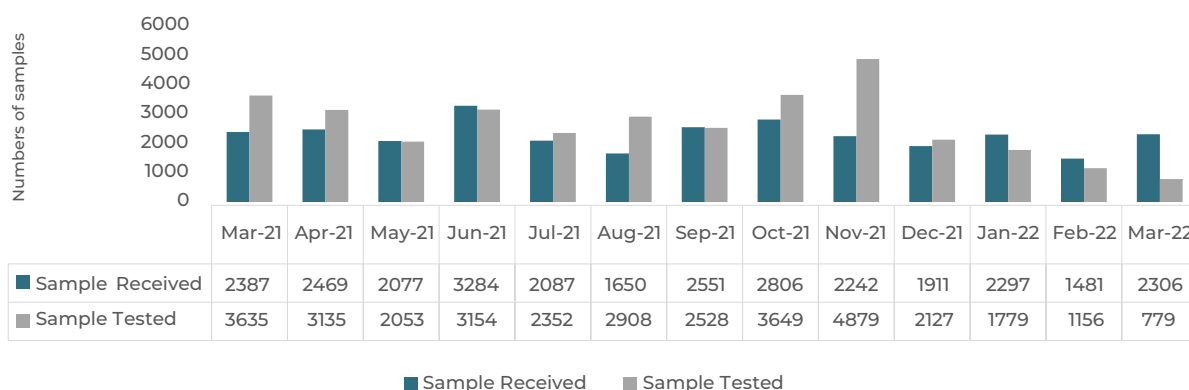


Figure 9: Viral load from March 2021 to March 2022

TREATMENT COVERAGE

The chart below displays eligible PLHIV on ART who had viral load testing. While viral load suppression is generally high, coverage remains sub-optimal across some states.

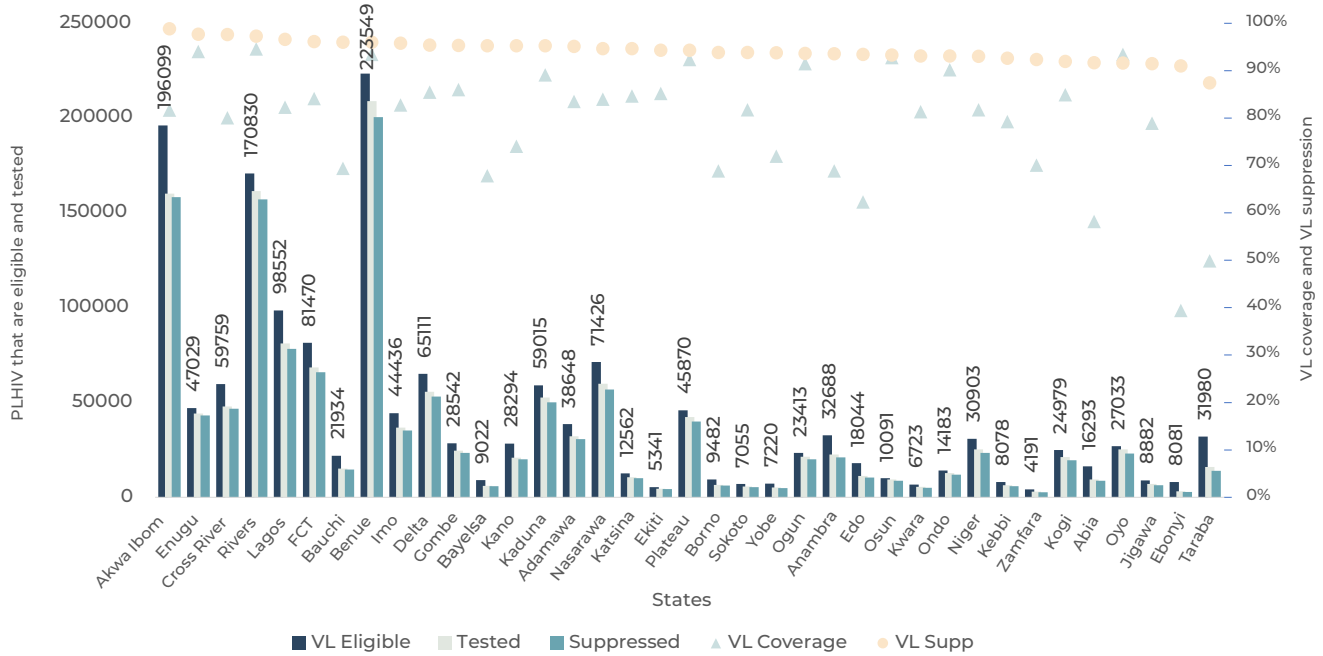


Figure 10: Treatment Current, Viral Load Coverage and VL Suppression in March 2022

CONTINUITY IN TREATMENT

12 MONTHS COHORT RETENTION ANALYSIS BY STATES FOR MARCH 2022

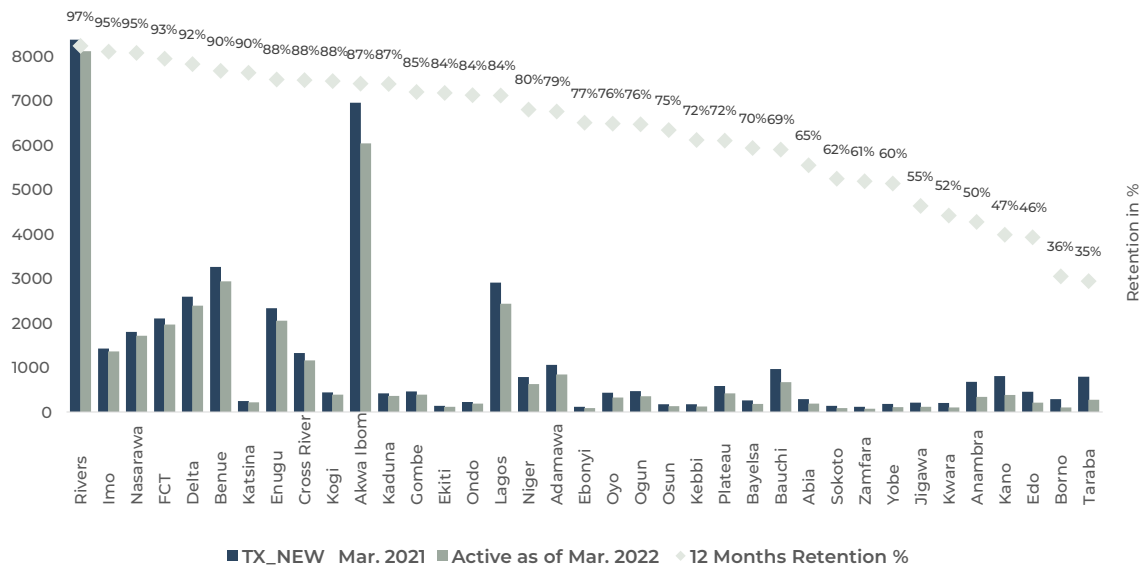


Figure 11: Months Cohorts Retention Analysis for March 2022

This graph represents twelve-month retention by states. It is the percentage of clients who were active on treatment in March 2021 who remained active on treatment in March 2022.

TREATMENT TREND BY STATE

The table below is a treatment trend analysis across various states for the months of December 2021 to March 2022.

STATE	DEC-21	JAN-21	FEB-22	MAR-22
ABIA	14688	17077	19868	25970
ADAMAWA	37645	39972	40428	40736
AKWA IBOM	215842	214474	212939	210094
ANAMBRA	33692	32906	35286	35015
BAUCHI	28879	28255	27554	23439
BAYELSA	10468	15177	10902	10132
BENUE	228840	218088	229733	231481
BORNO	15517	14578	13129	10422
CROSSRIVER	62985	62942	63982	64297
DELTA	67444	68277	68613	69557
EBONYI	3576	6704	8733	8941
EDO	19578	23502	22790	19381
EKITI	5906	6071	6308	6538
ENUGU	62713	64030	56272	57667
FCT	84344	85112	85818	86903
GOMBE	30405	30215	30487	30154
IMO	52237	54167	57203	60297
JIGAWA	9629	9572	9529	9665
KADUNA	59833	60539	60909	61558
KANO	40083	38521	35186	29832
KATSINA	13828	14129	14449	14545
KEBBI	10631	12051	12548	11433
KOGI	27279	27835	28613	29469
KWARA	9885	10217	9626	7481
LAGOS	112095	115654	113728	110211
NASARAWA	73766	74629	75102	75751
NIGER	27686	32804	34984	32500
OGUN	25150	25878	26373	26855
ONDO	15560	16121	16726	17508
OSUN	11553	12004	12476	12868
OYO	29009	30007	30798	31348
PLATEAU	46928	48111	47452	47707
RIVERS	179341	179575	177003	184974
SOKOTO	9056	9417	9268	8326
TARABA	5030	29432	32676	34575
YOBE	7790	8012	8022	7678
ZAMFARA	6572	7656	7566	6838