



NIGERIA

NATIONAL HIV SURVEILLANCE REPORT

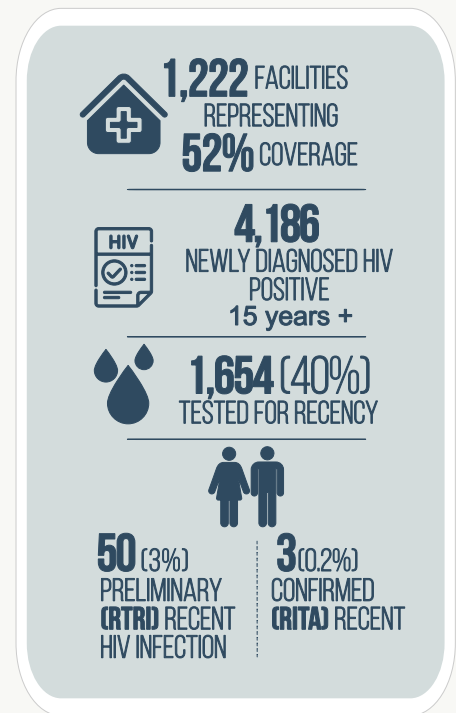
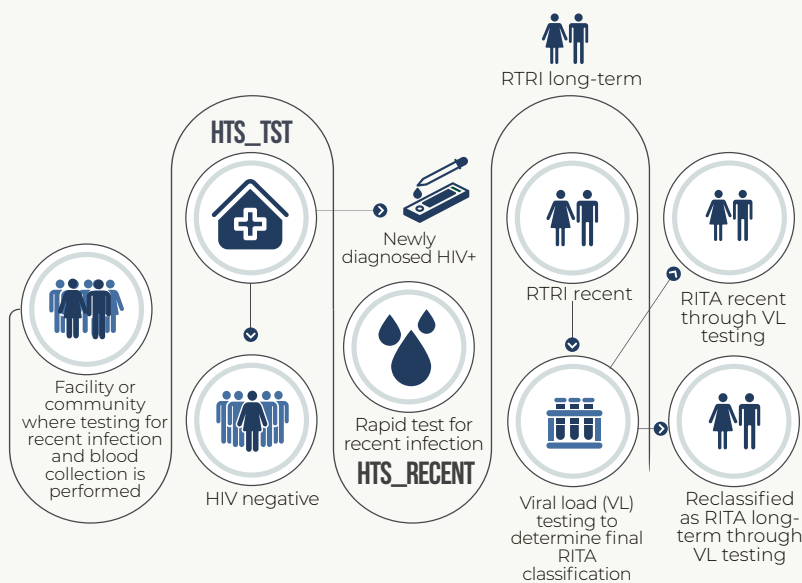
October 2023 Edition

Data is for October 2023 and was downloaded from the NDR on 20 November 2023

OVERVIEW

HIV Surveillance is the ongoing systematic collection, analysis, interpretation, and use of data to improve health determinants and disseminate information regarding HIV/AIDS related events. In Nigeria, data is collected from client-centred monitoring throughout the cascade of clinical care to guide the national response and understand the trend of the epidemic. As Nigeria approaches epidemic control, three surveillance activities have been key in tracking the epidemic: HIV-1 Recent Infection Surveillance, Case-based Surveillance (CBS), and Mortality Surveillance (MS).

HIV-1 RECENT INFECTION SURVEILLANCE



The chart below summarizes HIV-1 Recent Infection Surveillance in 1,147 activated facilities and it displays the number of clients with new HIV+ diagnosis, number of HIV+ clients who had RTRI, and number of RTRI recent clients who had viral load confirmation for RITA.

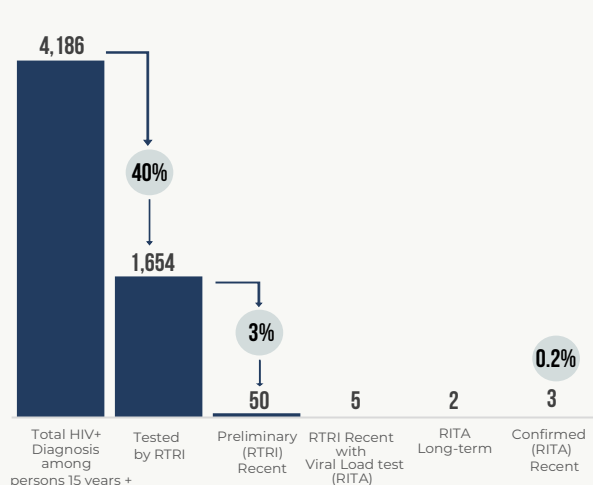
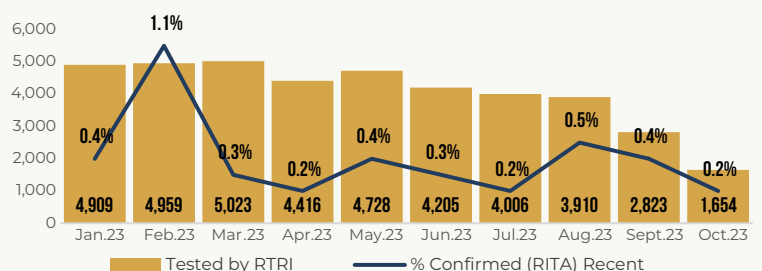


Figure 1
HIV-1 Recent Infection Surveillance Cascade in October 2023



The chart above shows the HIV recent infection trend for the period January 2023 to October 2023, the data shows a downward trend of recent infections from March 2023 to October 2023.

Figure 2
Confirmed recent infection from January 2023 to October 2023

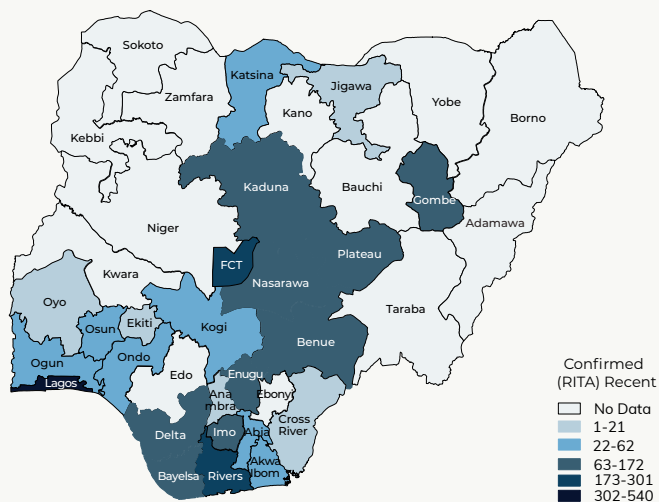


Figure 3

The map above is a geographical distribution of confirmed RITA recent infections from March 2020 to October 2023.

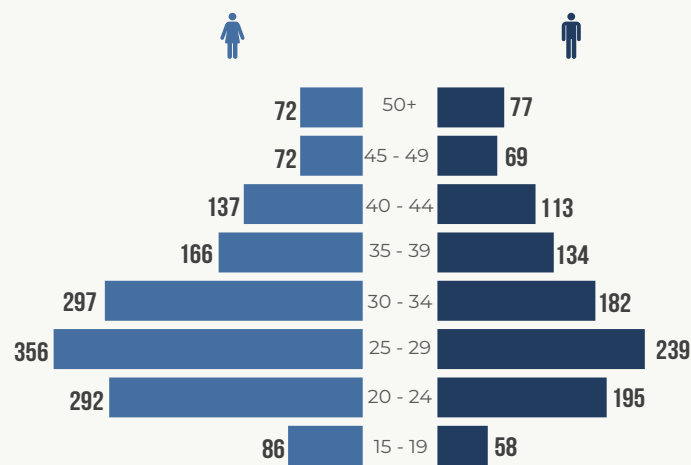


Figure 4a

Confirmed (RITA) recent infection by age and sex in Nigeria from March 2020 to October 2023

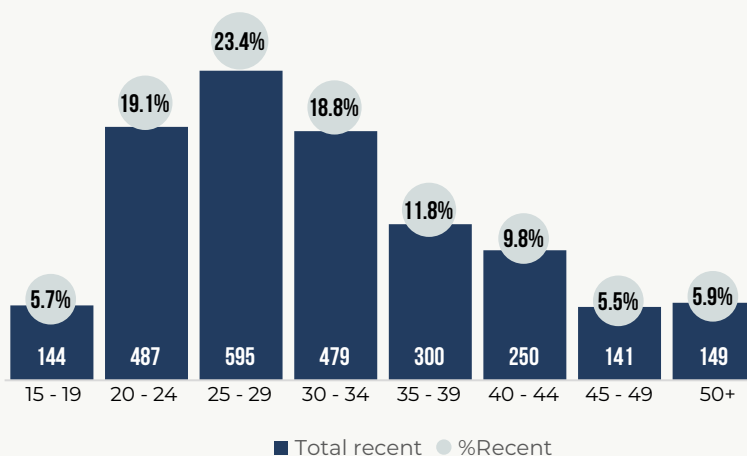


Figure 4b

Confirmed (RITA) recent infection by age and sex in Nigeria from March 2020 to October 2023

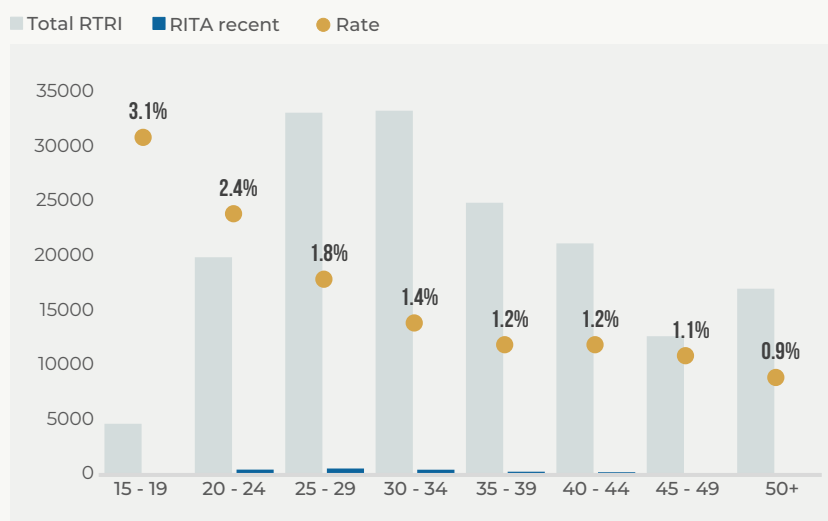


Figure 5

The proportion of confirmed recent infections disaggregated by age as of October 2023

Total RTRI recent with viral load test recorded for the month of October was 5, three of which were true recent infections, two were reclassified. All the two reclassified infections were from Benue, two recent infections were from Plateau and one from Benue.

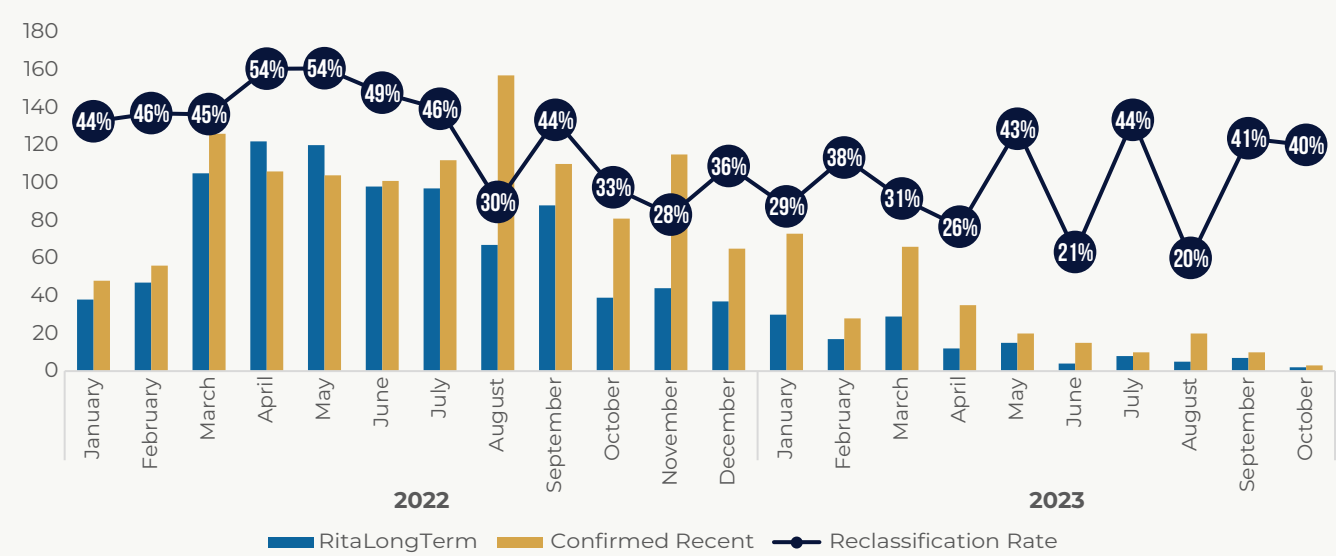


Figure 6
Reclassification rate by month from 2022 to date

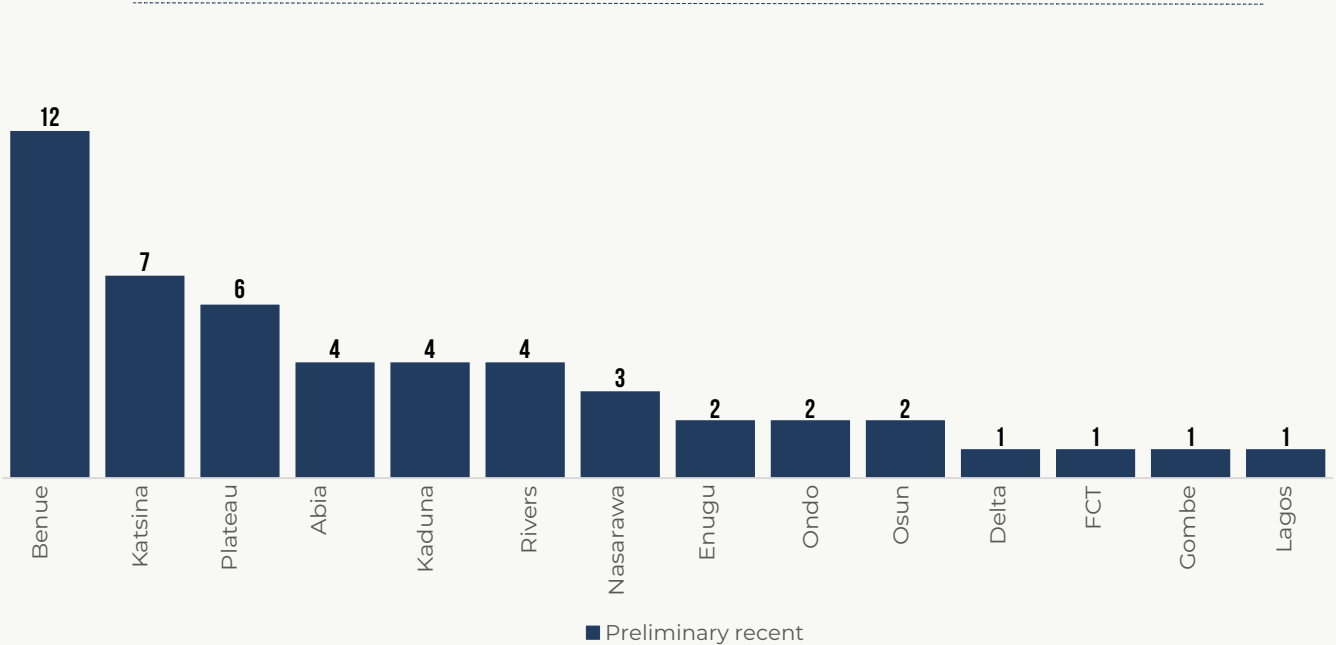


Figure 7
State that recorded Preliminary recent infections in October 2023

CASE-BASED SURVEILLANCE

Case-based Surveillance systematically and continuously collects data on demographic and health events (sentinel events) about clients with HIV infection from diagnosis and routine clinical care to final outcomes. This data is used to characterize the HIV epidemic and guide program improvement.

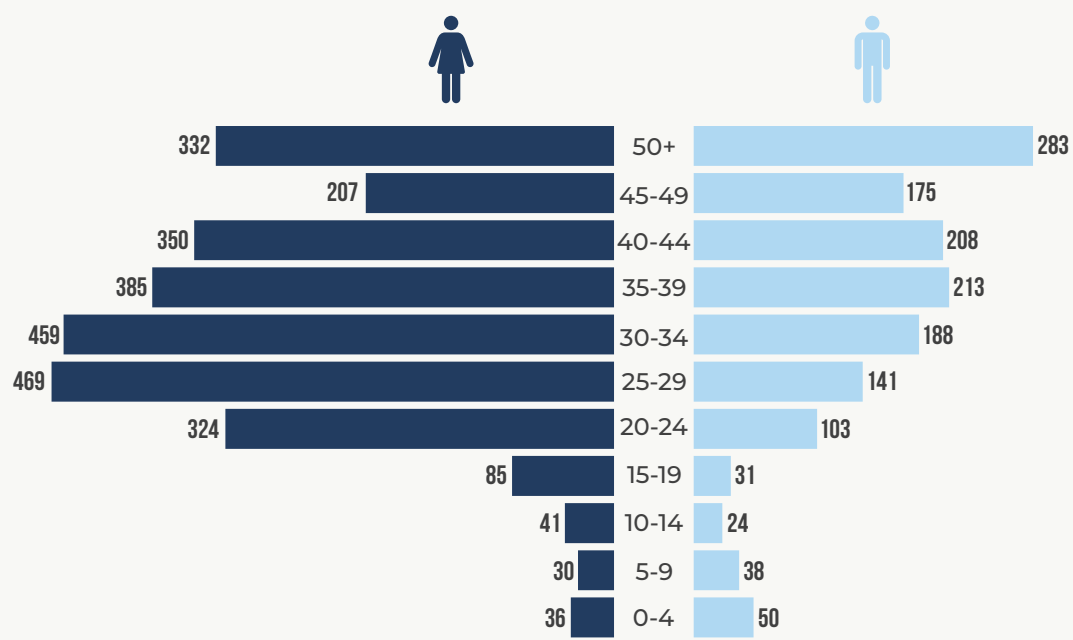


Figure 8
Number of clients newly diagnosed HIV+ in October 2023

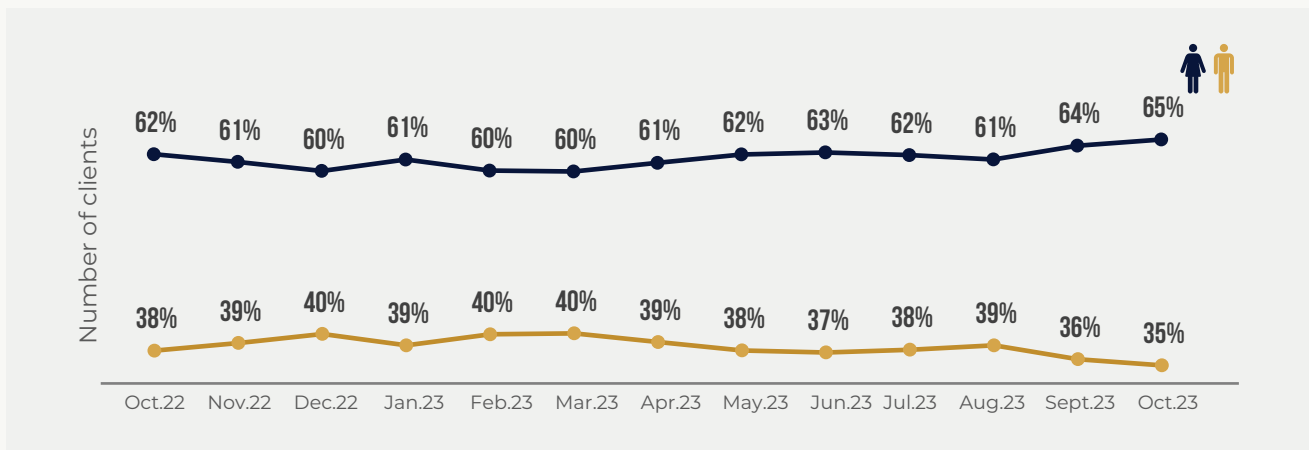


Figure 9
Monthly trend of clients who commenced treatment from October 2022 to October 2023.

The monthly trend of clients by sex who commenced treatment. Female accounts for 65% while Males 35% for the month of October 2023.

This chart shows the number of clients who tested HIV+ and commenced treatment (linkage) in October 2023. The total number of clients who commenced treatment in October is 11,098, of this number, 65% (7,166) were female why 35%(3,932) are male. The number of clients who commenced treatment is highest in the 25-29 age band (**16.0%**) closely followed by age band 30-34 with (**15.9%**), the lowest is 5-9(**1.1%**) age band.

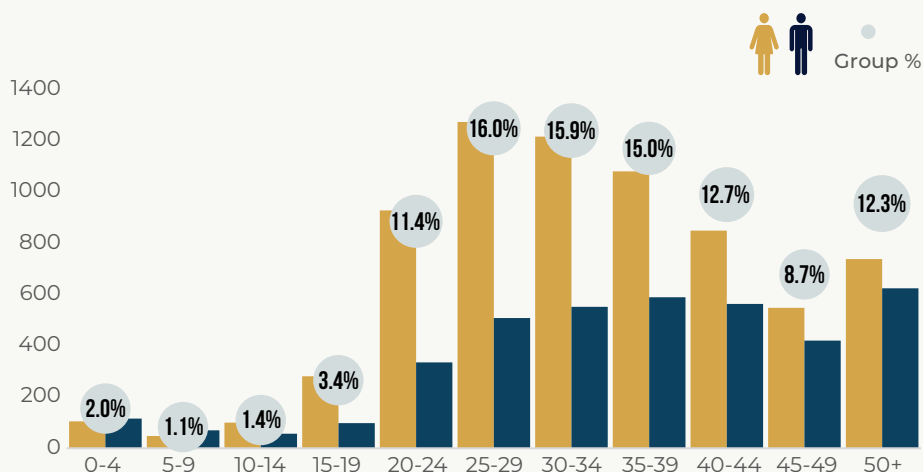
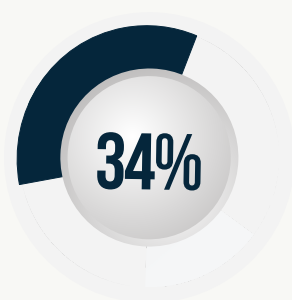
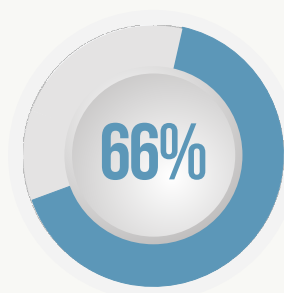


Figure 10

The number of clients started on treatment in October 2023.



■ CD4 < 200



■ CD4 ≥ 200

Figure 11

Client CD 4 COUNT < 200 and > =200 at initiation in October 2023

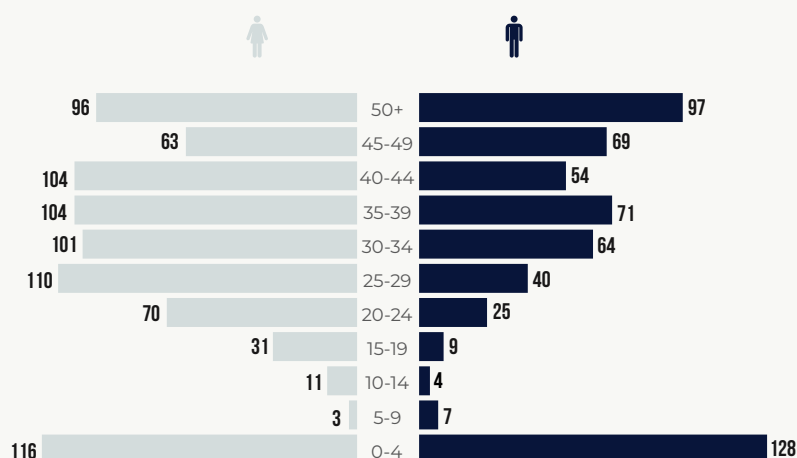


Figure 12a

Distribution of Advanced HIV Disease (WHO stage III and IV HIV disease, CD4 less than 200 and children under five) by age and sex in October 2023

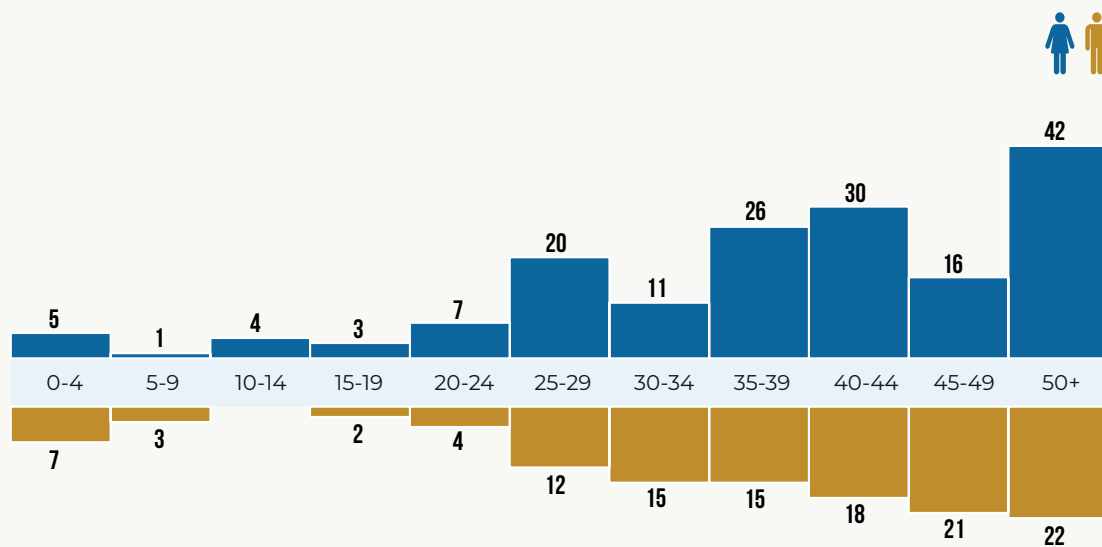


Figure 12b
WHO Clinical stage III and IV by age and sex in October 2023

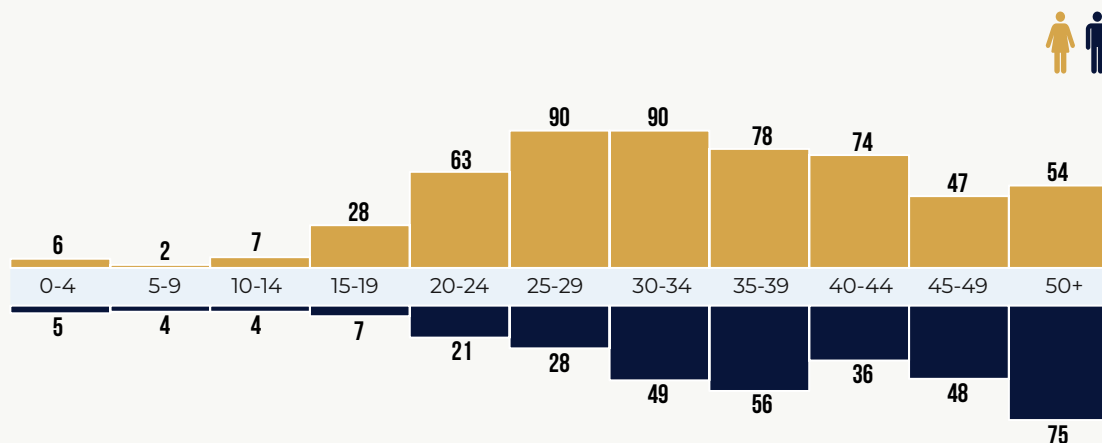


Figure 12c
Clients CD4 Count less than 200 at ART initiation in October 2023

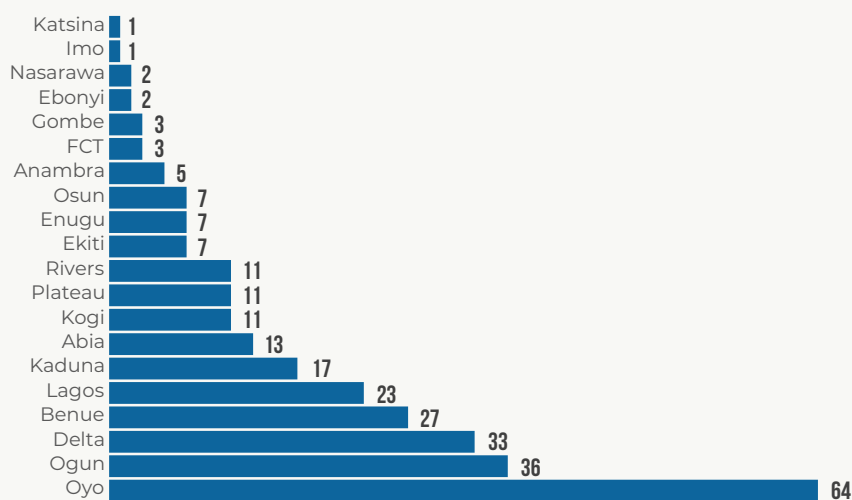


Figure 13
Distribution of newly diagnosed HIV+ clients with WHO stage III and IV HIV disease by state in October 2023

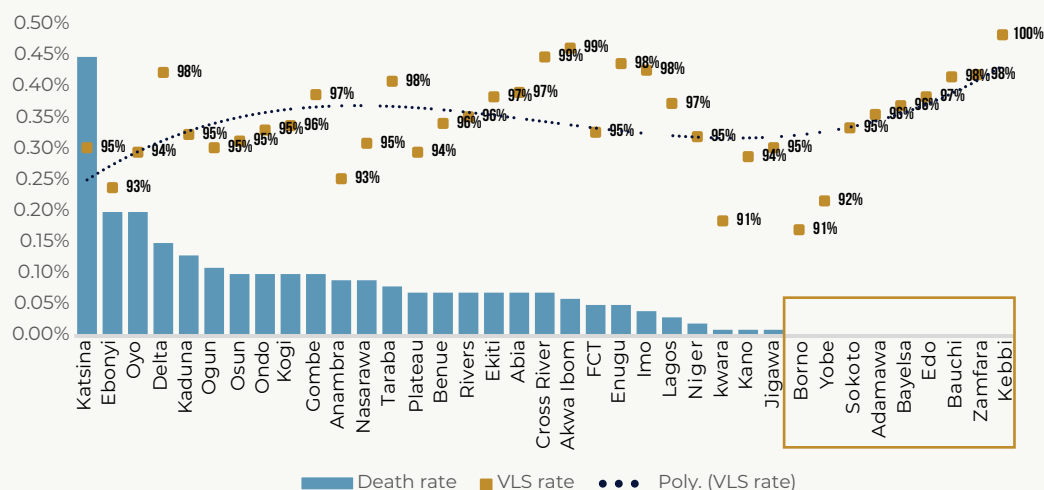


Figure 14
States with zero death rate in in October 2023

MORTALITY SURVEILLANCE

Mortality surveillance aims to determine the distribution and patterns of leading causes of death among people living with HIV (PLHIV) on treatment and the use of this information to reduce preventable deaths. The 2016 WHO Verbal Autopsy (VA) instrument is administered to eligible and consenting primary caregivers (usually a family member) who were with the deceased in the period leading to death. Data collected from VA is then uploaded to SmartVA analyze to generate the cause of death.

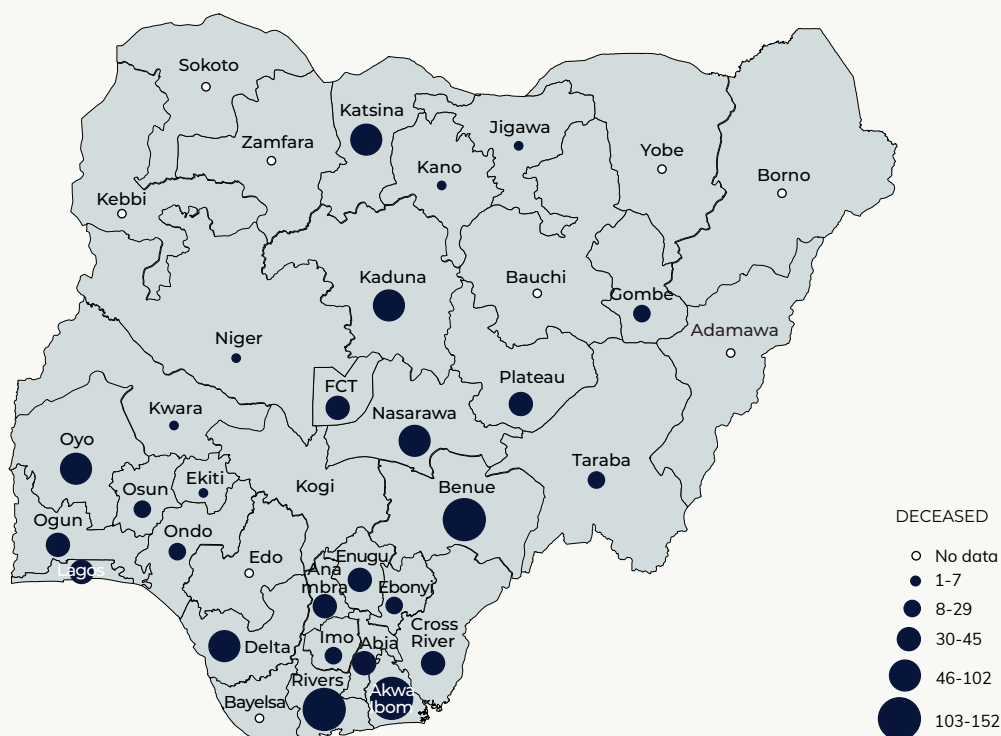


Figure 15
Distribution of deaths by States in October 2023

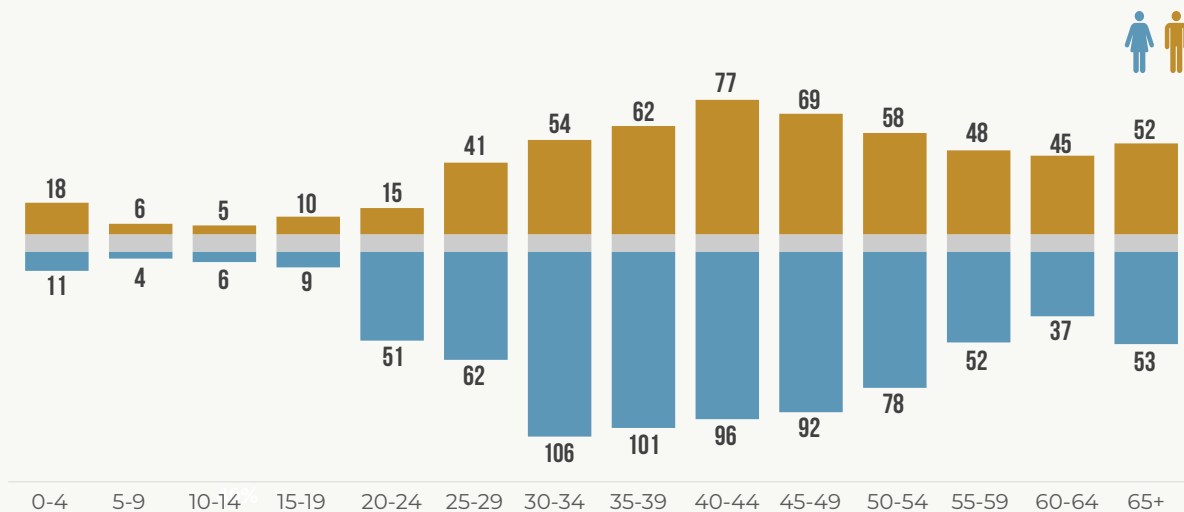


Figure 16
Deaths by Age and Sex in October 2023

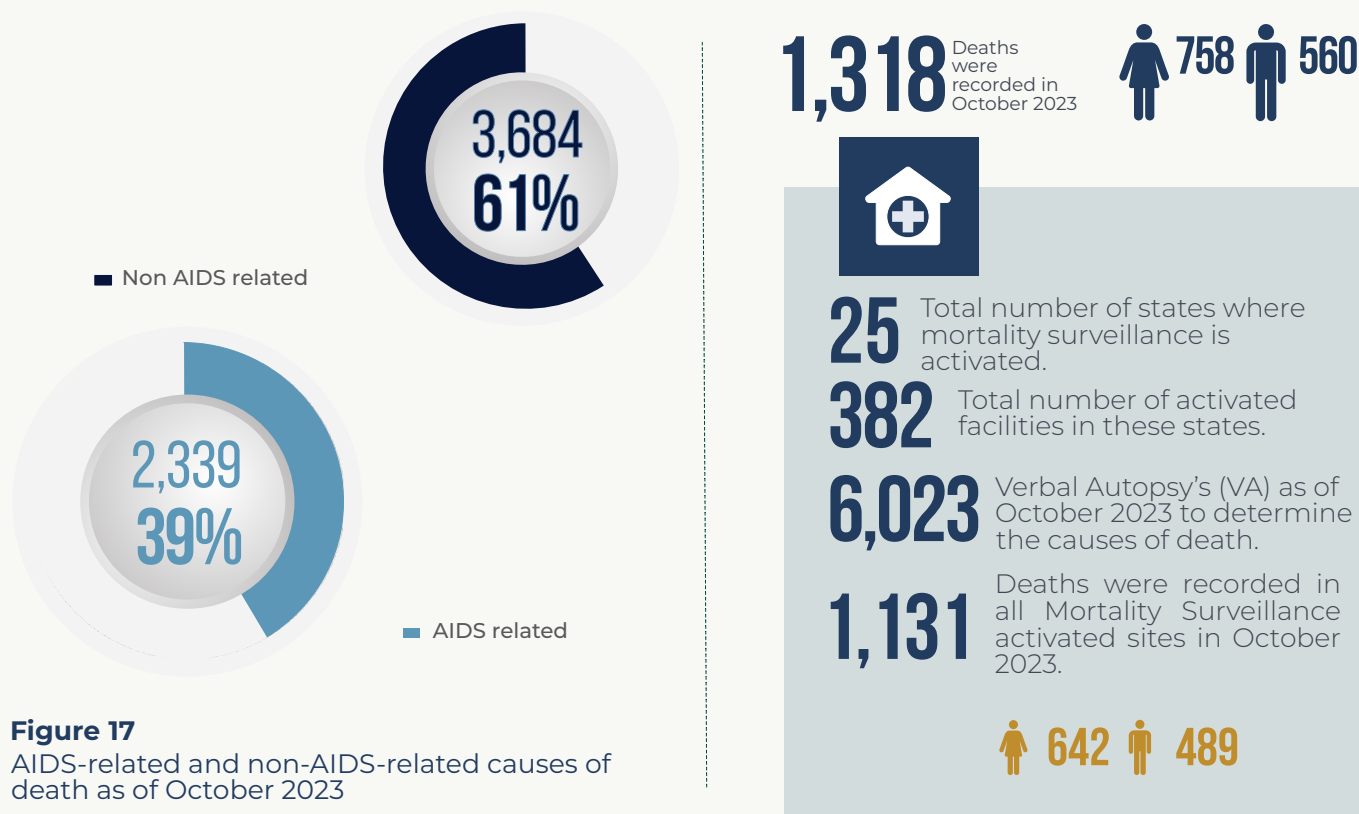


Figure 17
AIDS-related and non-AIDS-related causes of death as of October 2023

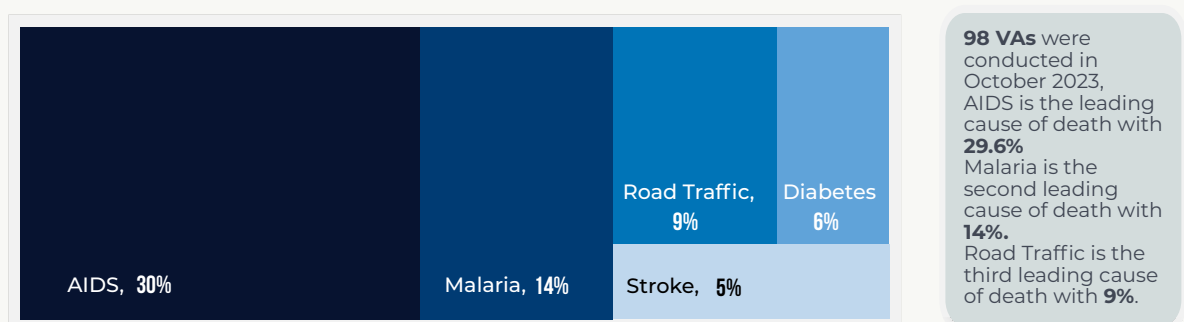


Figure 18
Top 5 causes of death among PLHIV in October 2023

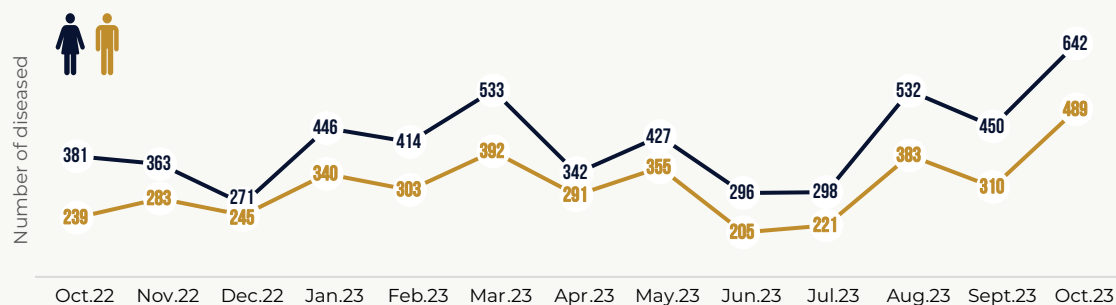


Figure 19
The number of clients on treatment reported dead in the MS-activated site in October 2023.

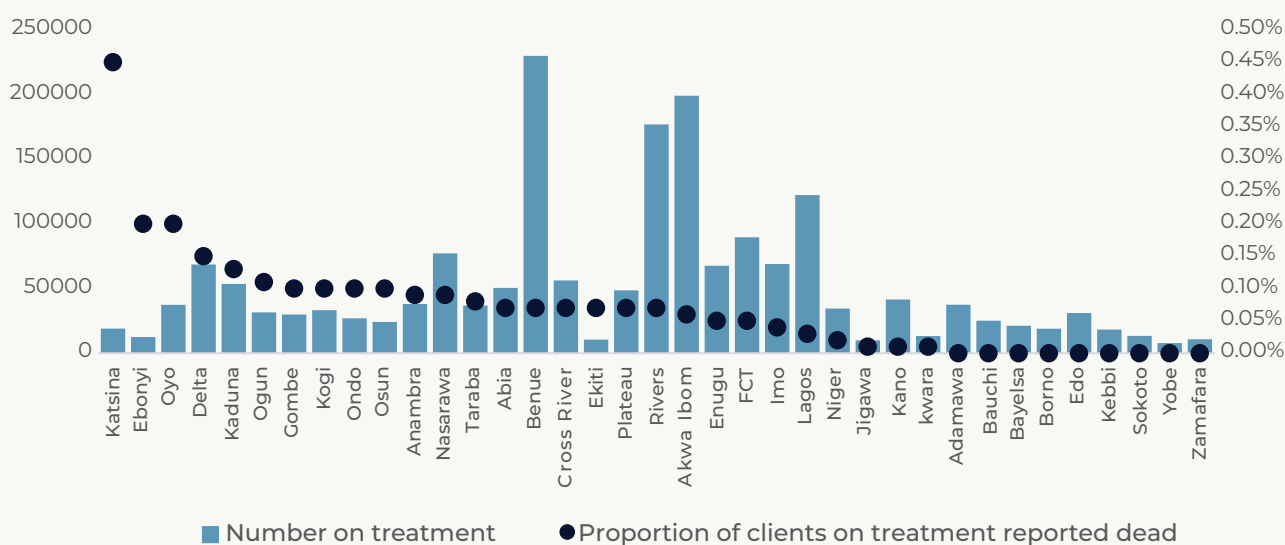


Figure 20
The proportion of clients on treatment reported dead in October 2023

This chart shows the proportion of clients who were reported dead in October 2023 disaggregated by State. The death rate was calculated as the number of clients on treatment who are reported dead per the total number of clients actively on treatment. A high death rate is recorded amongst states with lower TX_CURR.